

*The Vermont Department of Health*

# 2007 DENTIST SURVEY SUMMARY REPORT

*Guidance • Support • Prevention • Protection*



## OUTLINE

- **Overview and Key Findings**
- **Survey Question Analysis**
- **Comparison with Previous Surveys**

# **SURVEY OVERVIEW**

## **SURVEY DESCRIPTION**

Mailed to dentists with the license renewal forms in late summer 2007

Followed-up via mail and phone calls

The final response rate was 99%

- 2 dentists did not respond to the survey, 2005 data were used

## SURVEY DESCRIPTION (continued)

### **Questions asked of dentists included:**

- Gender and age
- Specialty
- Location and hours of practice
- Whether they were accepting new patients
- Whether they work with hygienists
- Years worked in Vermont
- Efforts to hire an associate
- Retirement plans

## KEY FINDINGS

- There were 355 dentists working in Vermont
- 79% were primary care dentists, including:
  - *272 in general dentistry*
  - *10 in pediatric dentistry*
- 17% work 40 or more hours per week, 54% work between 30 and 40 hours per week.
- The 355 dentists correspond to 269.8 Full Time Equivalents (FTEs)
- 210 of the dentists are 50 or older, 155 of these are 55 or older, and 91 are 60 or older
- 8 of the 10 pediatric dentists are 55 or older
- 5 of the 7 endodontists are 55 or older

## KEY FINDINGS (CONTINUED)

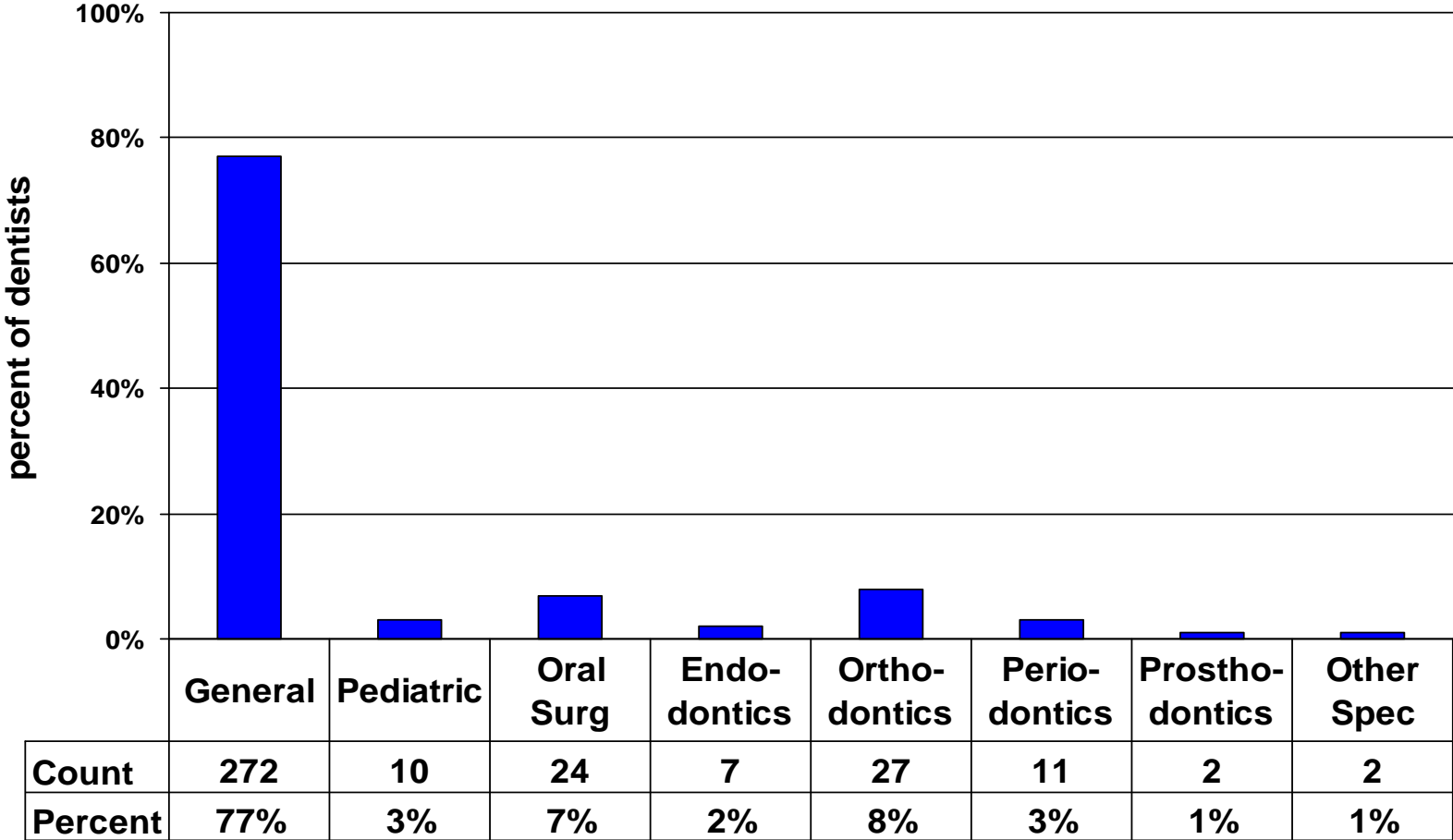
As compared with 2005:

- *There are 3 more dentists in total*
- *There are 8 fewer dentists under age 55, and 13 more dentists age 60 or older*
- *More dentists are working 40 hours or more, and more are working at more than one site*
- *There are 5.6 more FTEs in primary care, but 2.9 fewer FTEs in specialty care*
- *Percentage accepting new patients has remained approximately the same*
- *Average time to see a specialist has increased*

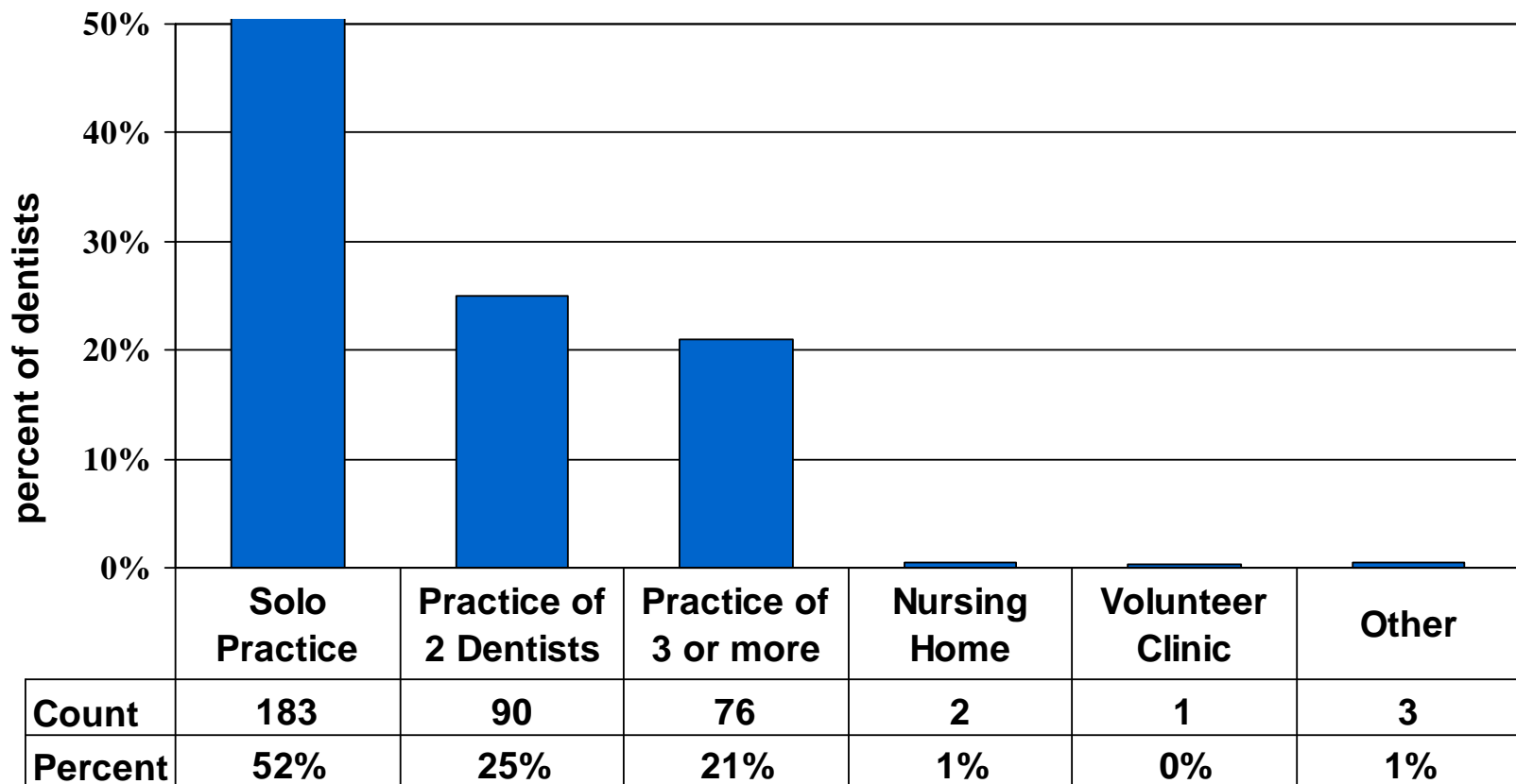
# **SURVEY QUESTION ANALYSIS**



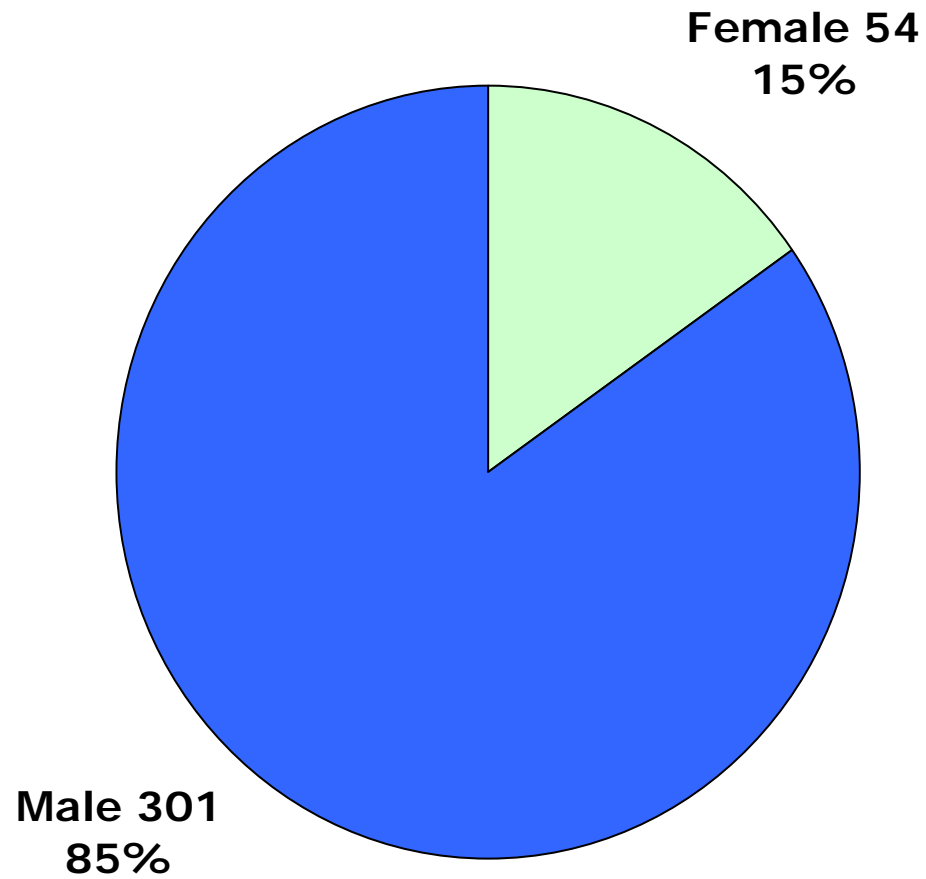
# SPECIALTY



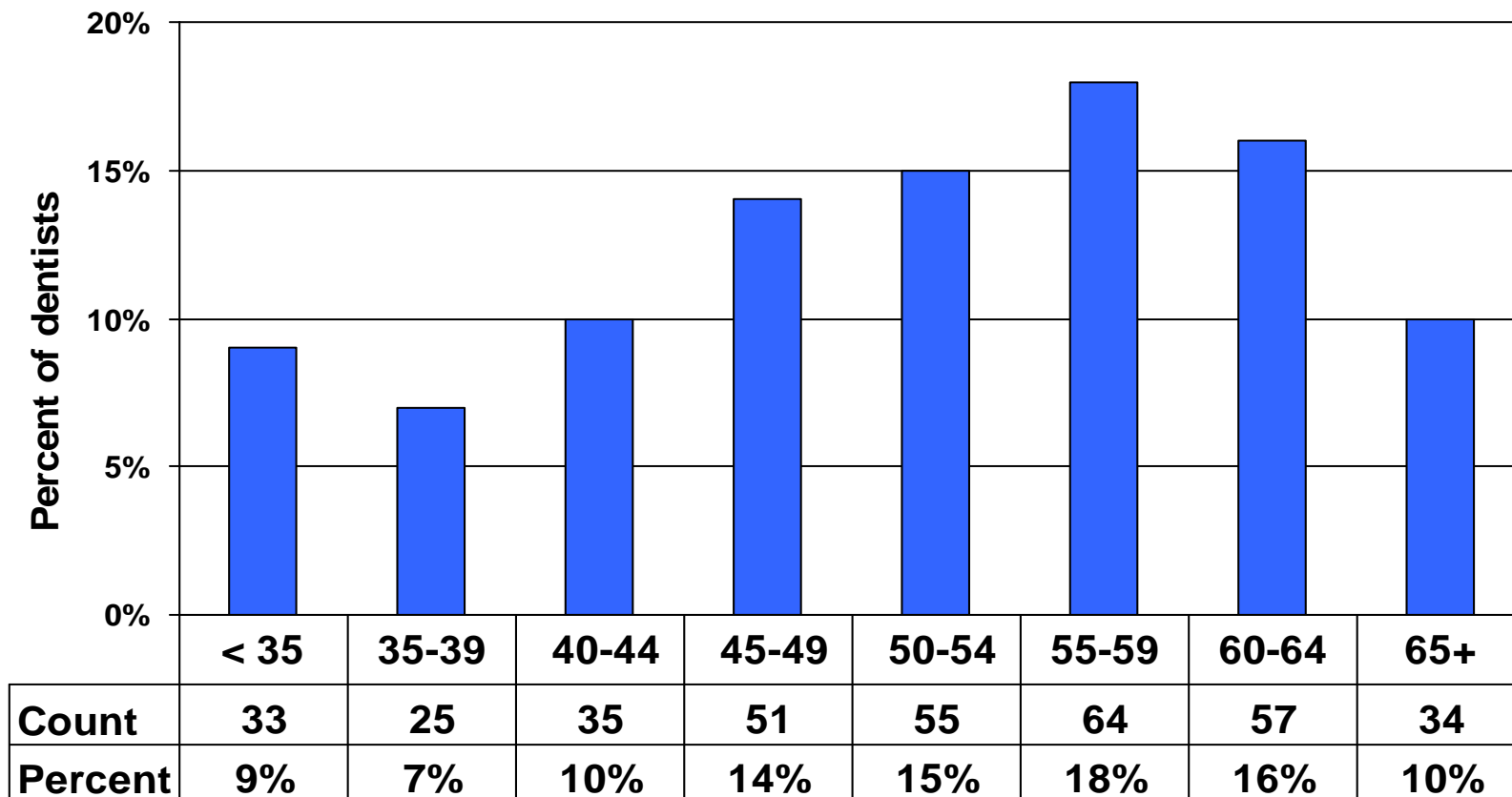
## PRACTICE SETTING



## GENDER

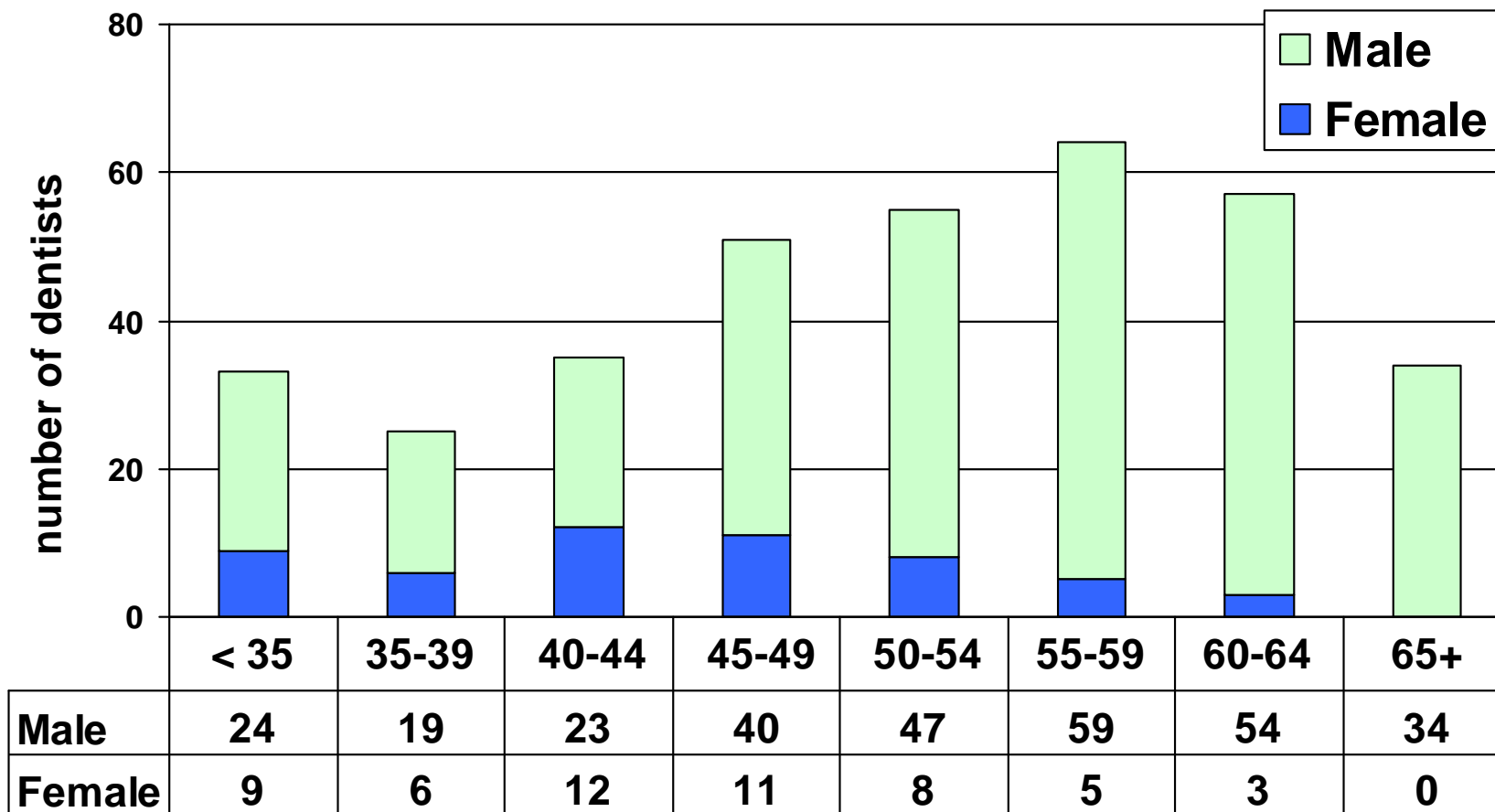


## AGE DISTRIBUTION



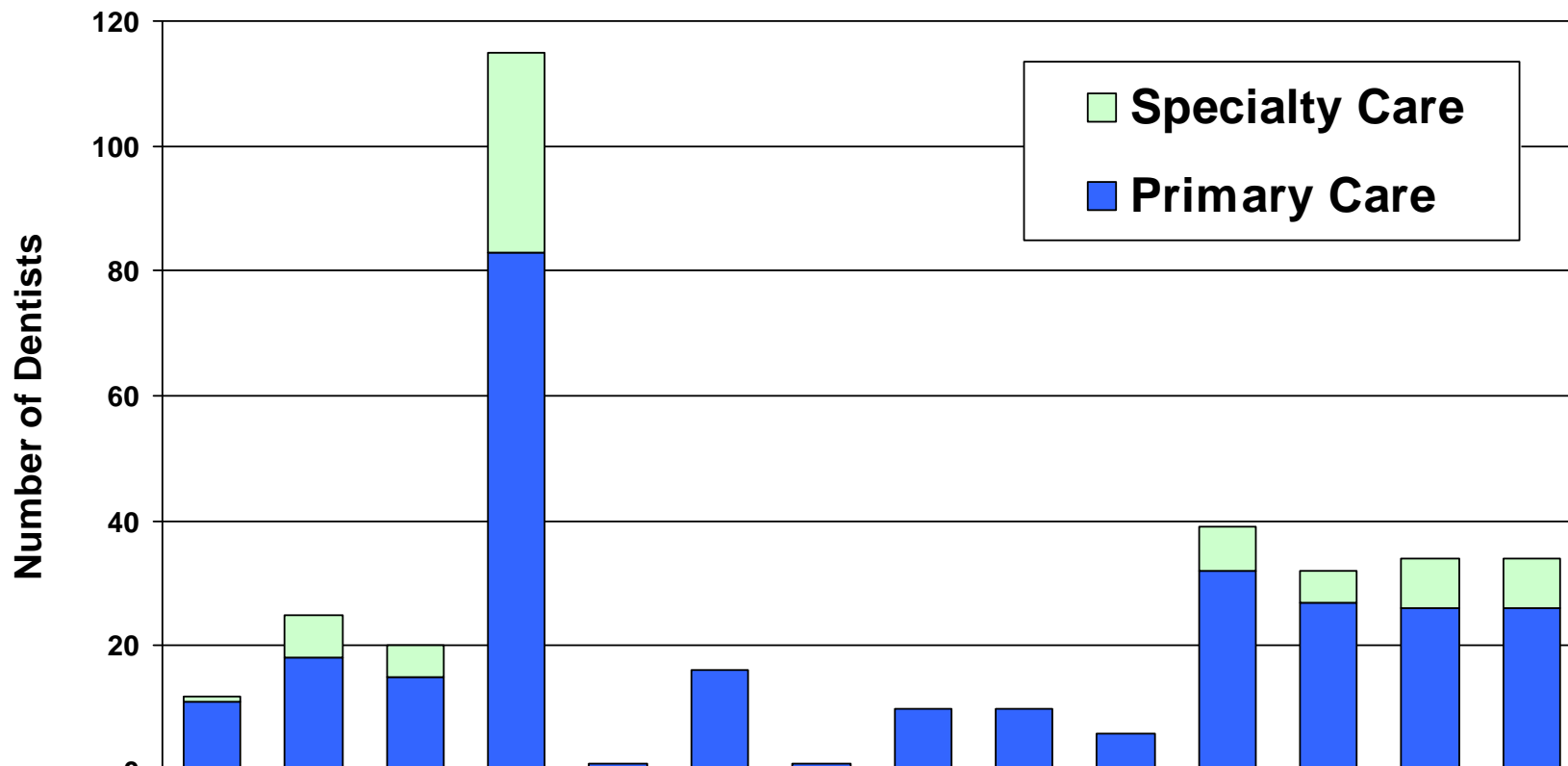
59% of all dentists, and 8 of the 10 pediatric dentists, are age 50 or older

## AGE DISTRIBUTION BY GENDER



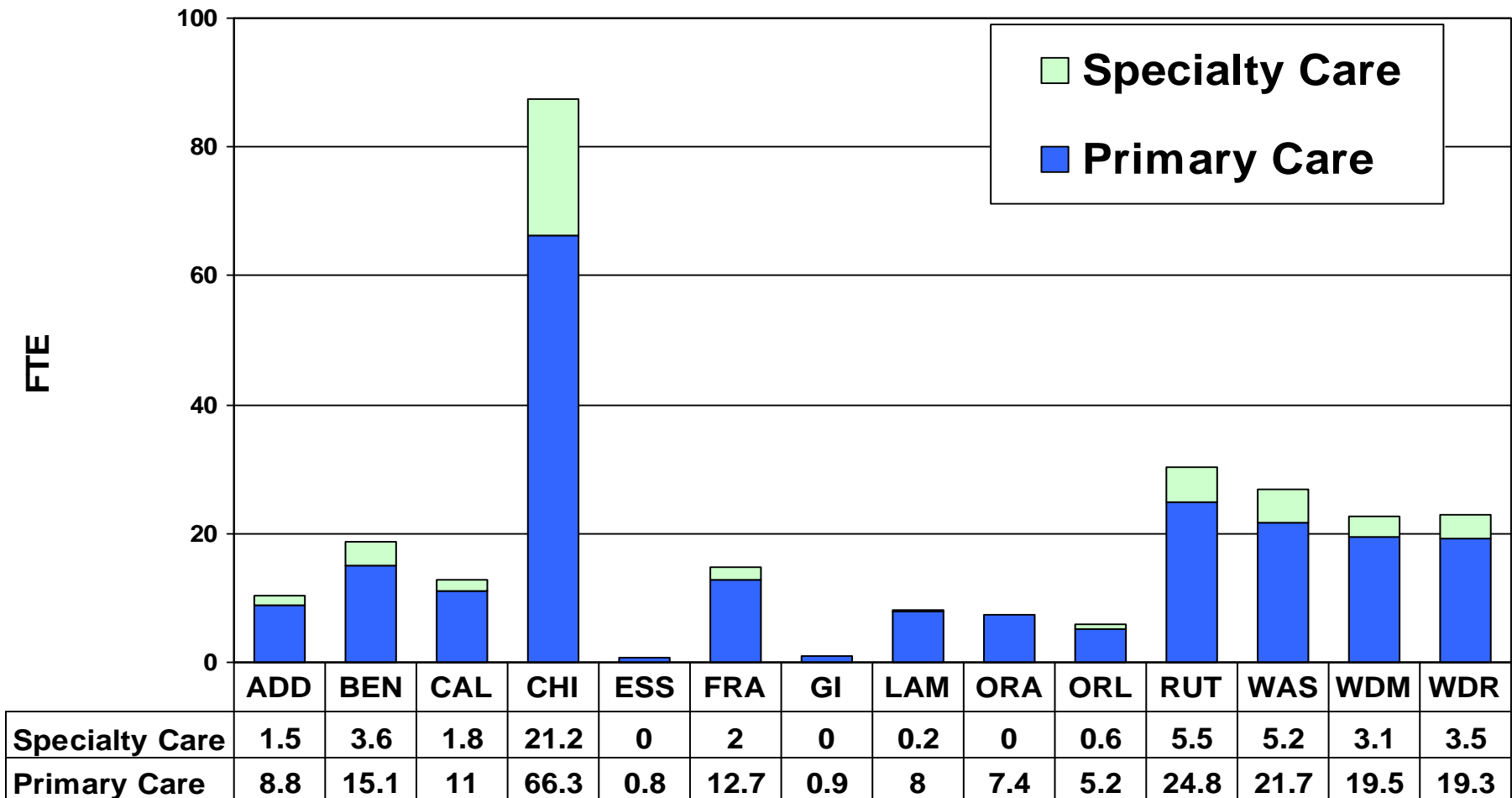
65% of the males, but only 30% of the females, are age 50 or older

# NUMBER OF DENTISTS BY COUNTY

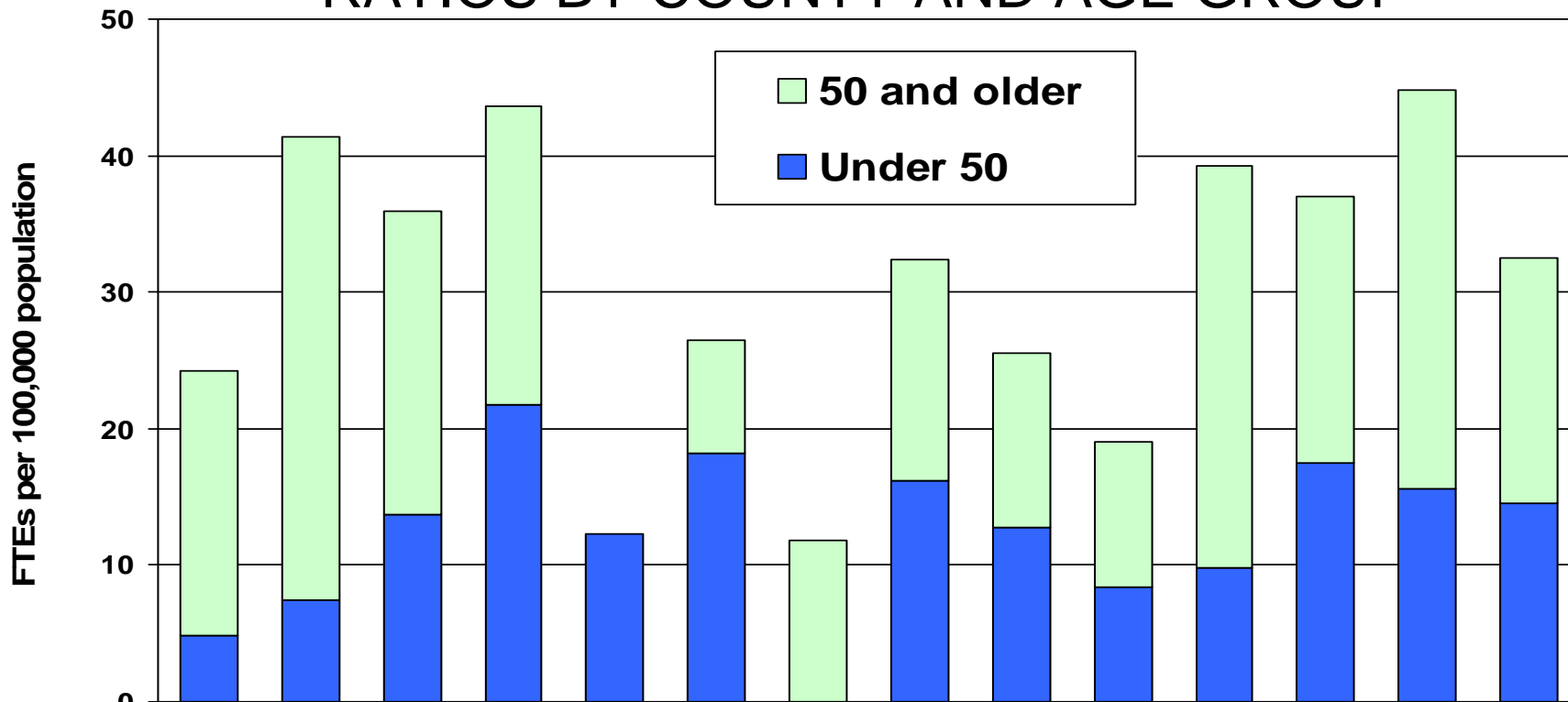


	ADD	BEN	CAL	CHI	ESS	FRA	GI	LAM	ORA	ORL	RUT	WAS	WDM	WDR
Specialty Care	1	7	5	32	0	0	0	0	0	0	7	5	8	8
Primary Care	11	18	15	83	1	16	1	10	10	6	32	27	26	26

## NUMBER OF FULL TIME EQUIVALENT DENTISTS BY COUNTY



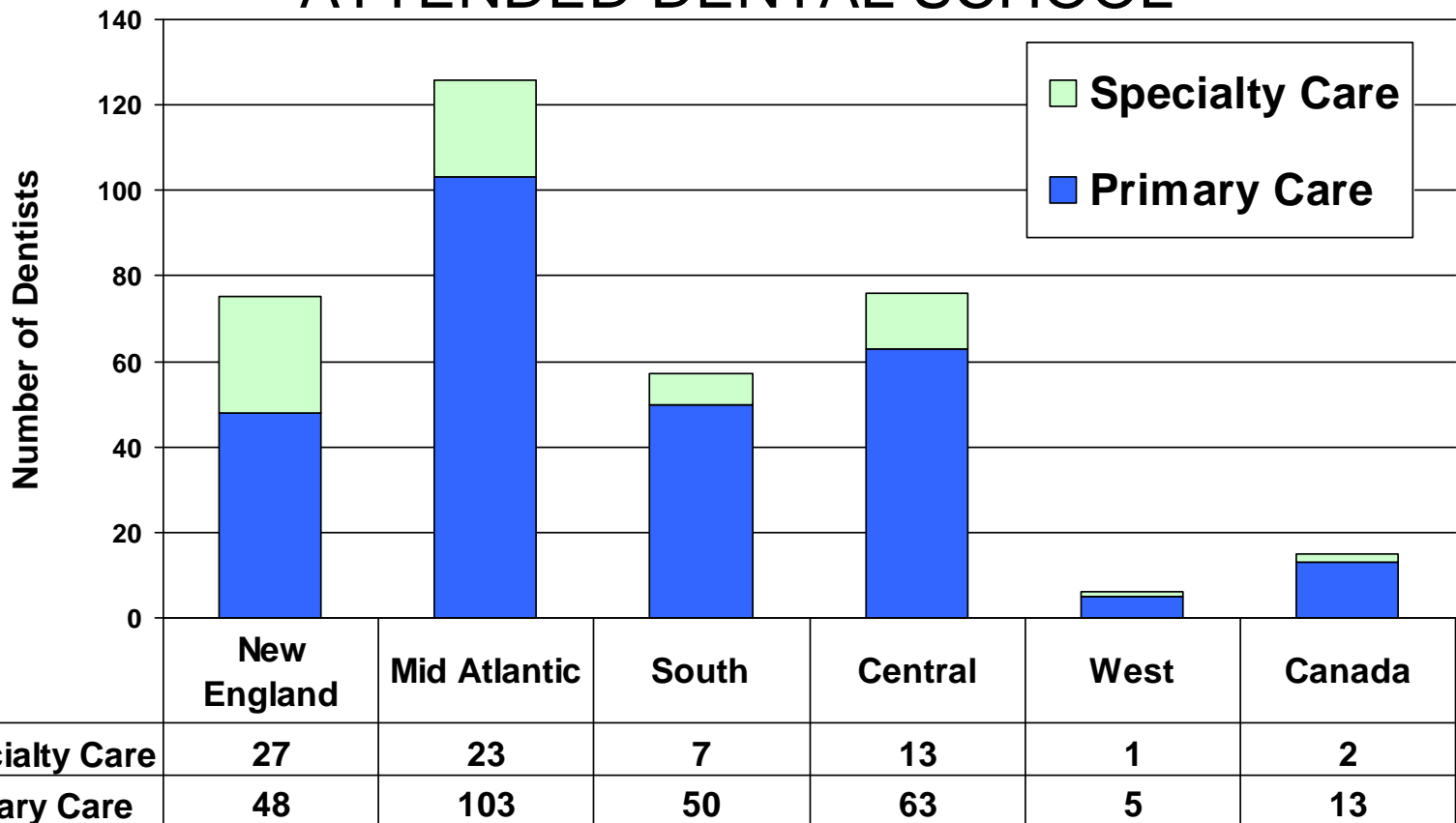
## PRIMARY CARE DENTIST TO POPULATION RATIOS BY COUNTY AND AGE GROUP



	ADD	BEN	CAL	CHI	ESS	FRA	GI	LAM	ORA	ORL	RUT	WAS	WDM	WDR
50 and older	19.3	34	22.2	21.9	0	8.34	11.8	16.2	12.8	10.6	29.4	19.5	29.2	17.9
Under 50	4.9	7.41	13.7	21.7	12.3	18.2	0	16.2	12.8	8.42	9.8	17.5	15.6	14.6

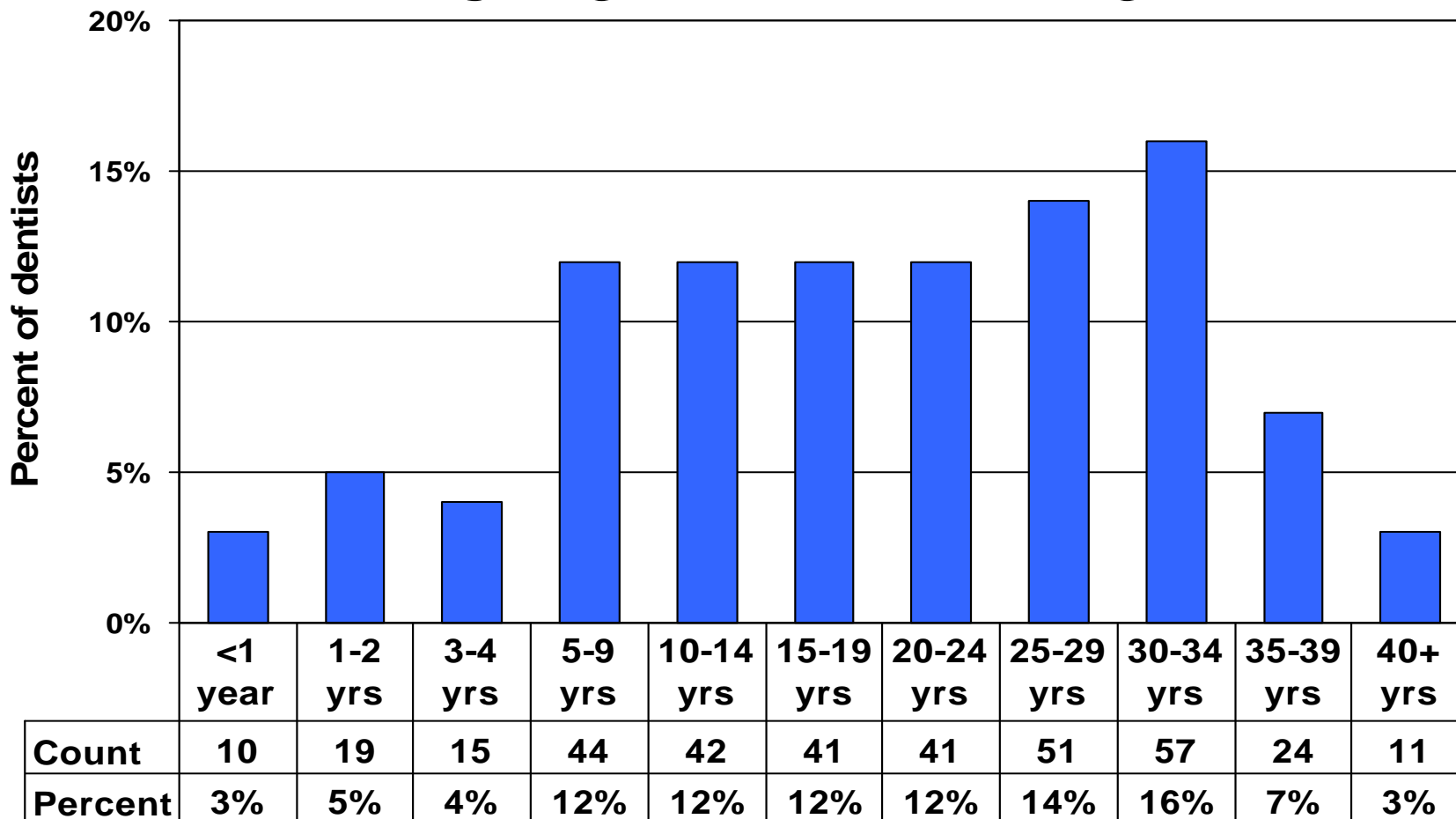


## WHERE VERMONT DENTISTS ATTENDED DENTAL SCHOOL



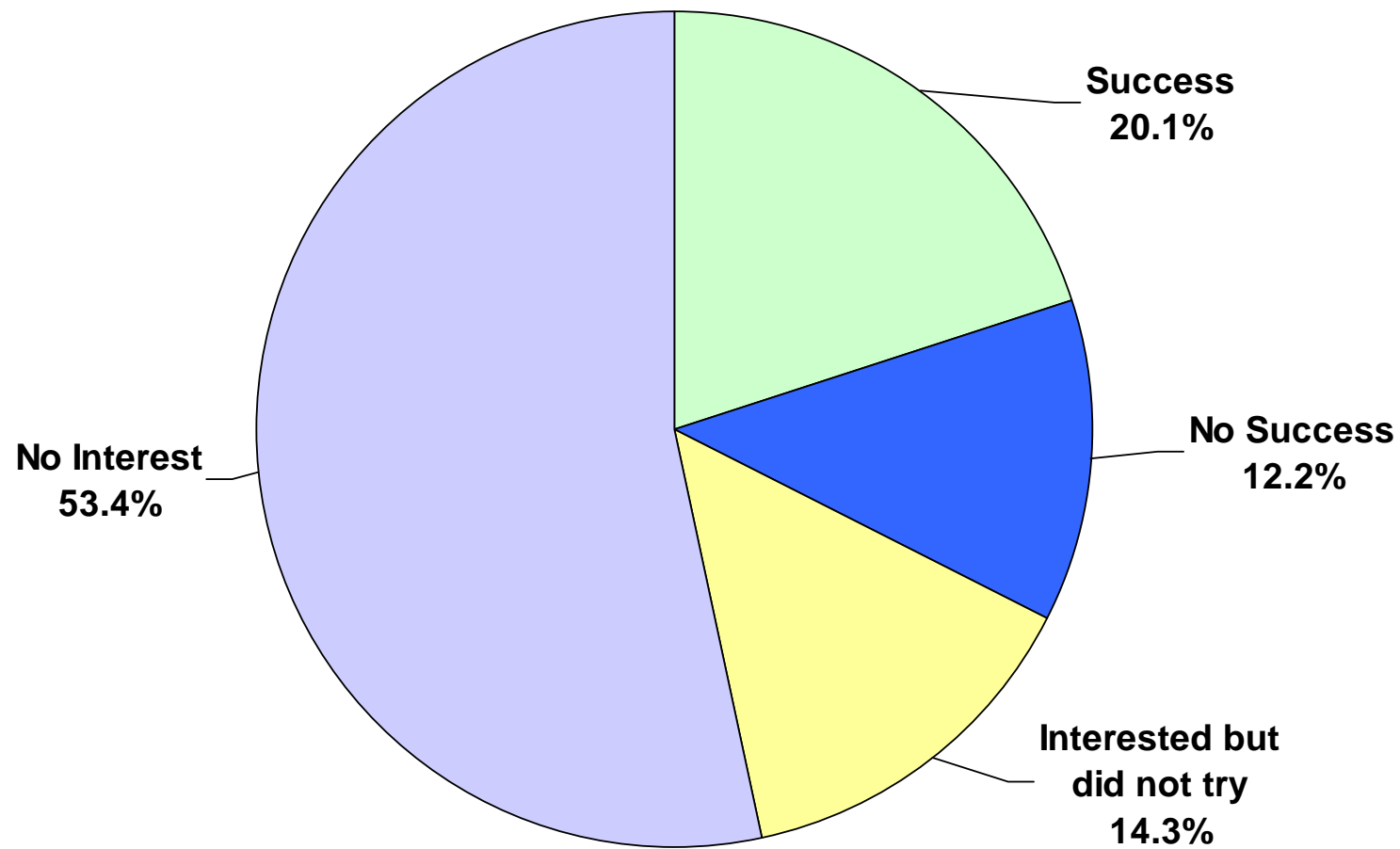
35% of all Vermont dentists and 37% of primary care dentists were trained in the mid-Atlantic region.  
 37% of all specialty care dentists were trained in New England.

## YEARS WORKED IN VERMONT



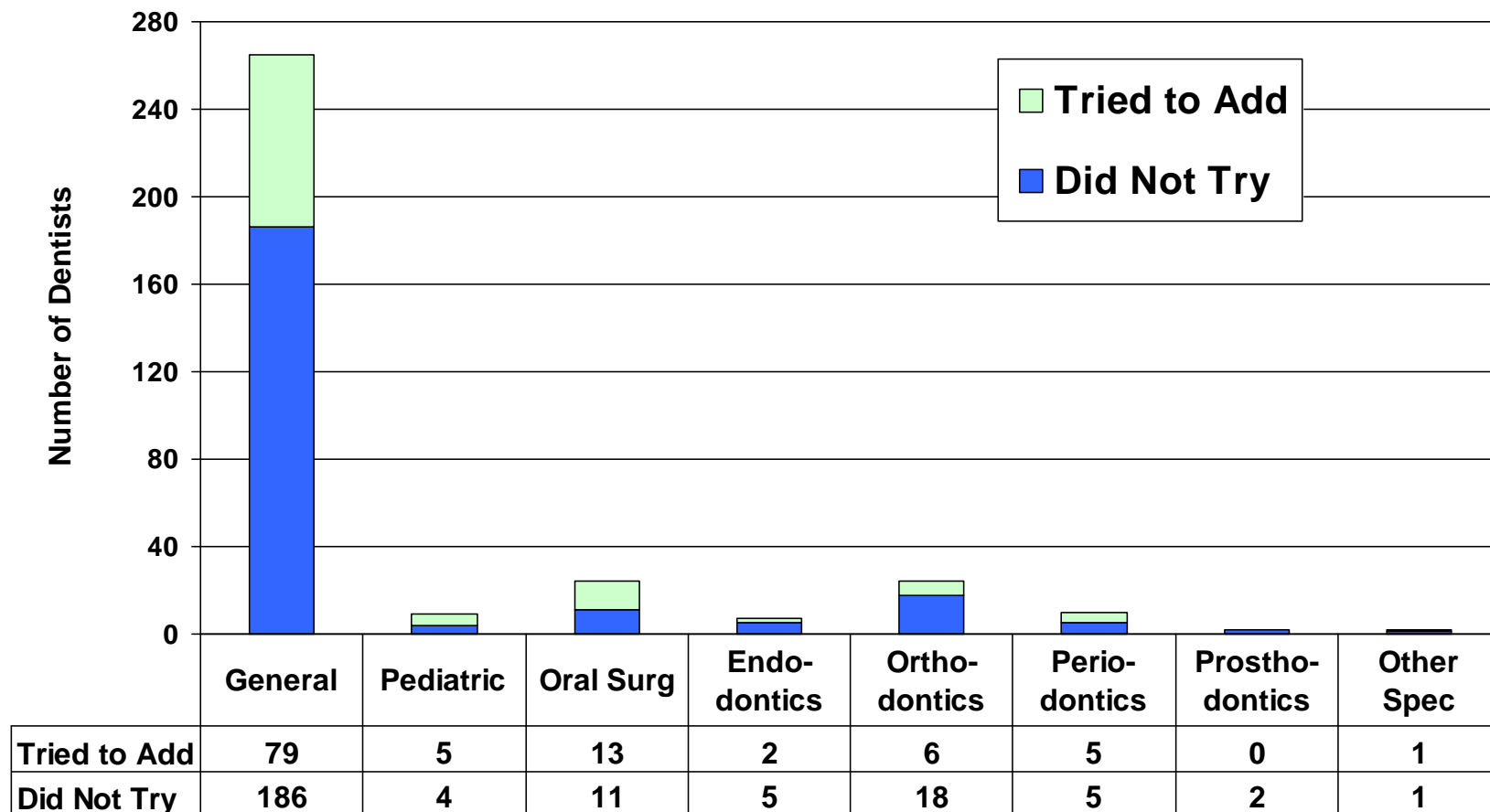
52% of the dentists surveyed had worked in Vermont for 20 or more years.

## INTERESTED IN ADDING AN ASSOCIATE



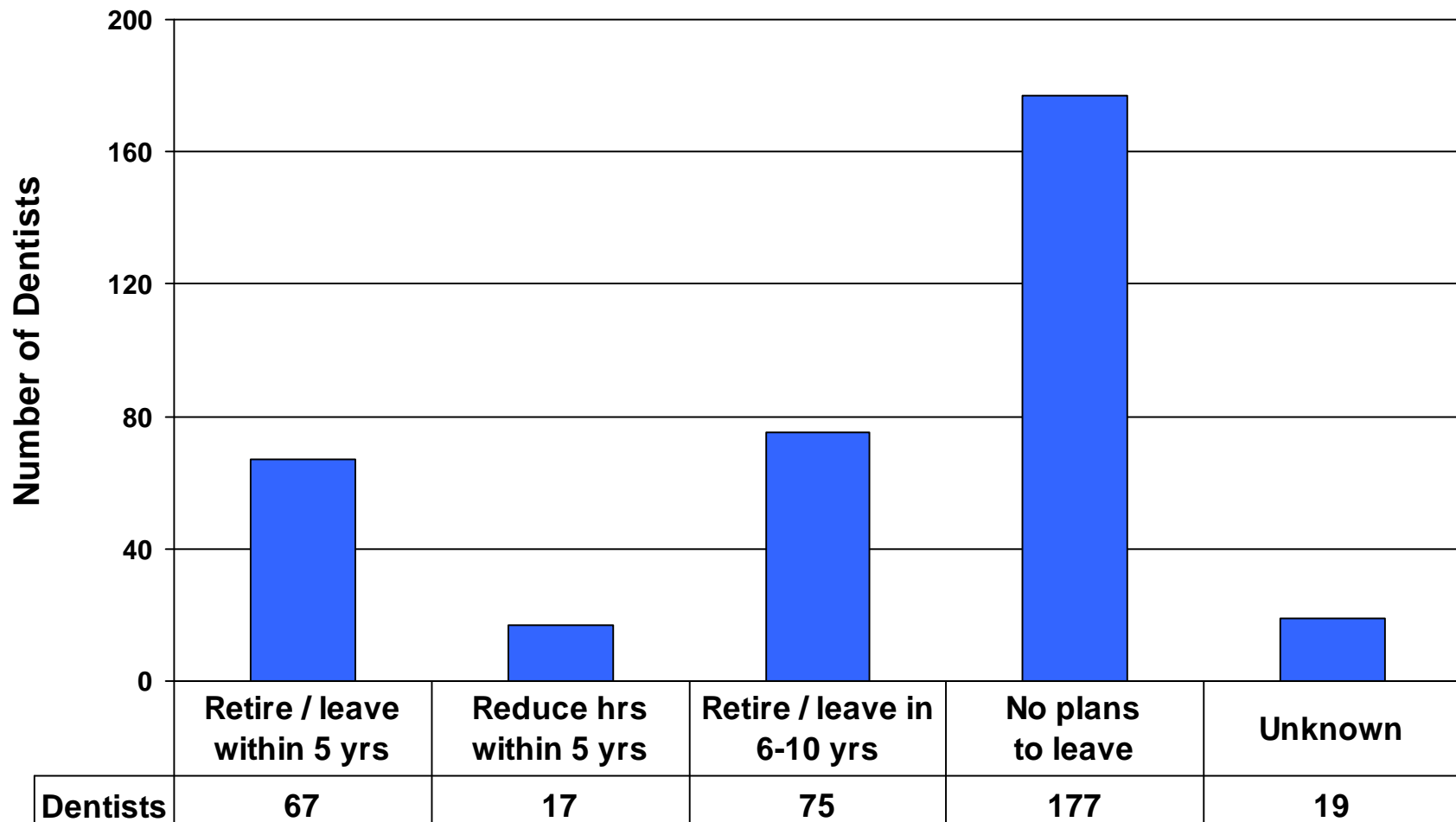
2007 Dentist Survey

## INTERESTED IN ADDING AN ASSOCIATE

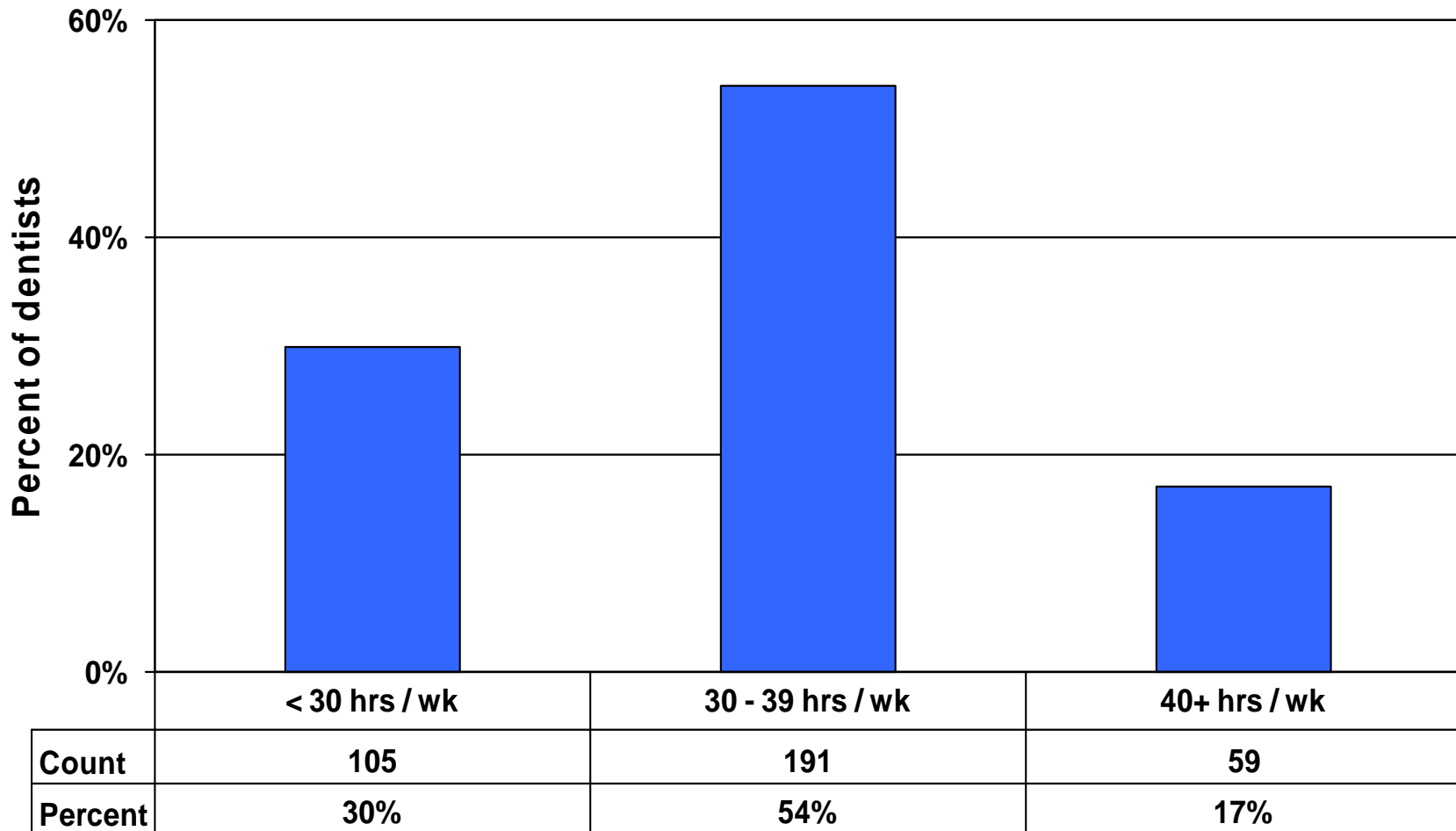


Tried to add - Includes responses "Success" and "No success".  
 Did not try - Includes responses "Interested" and "No interest".

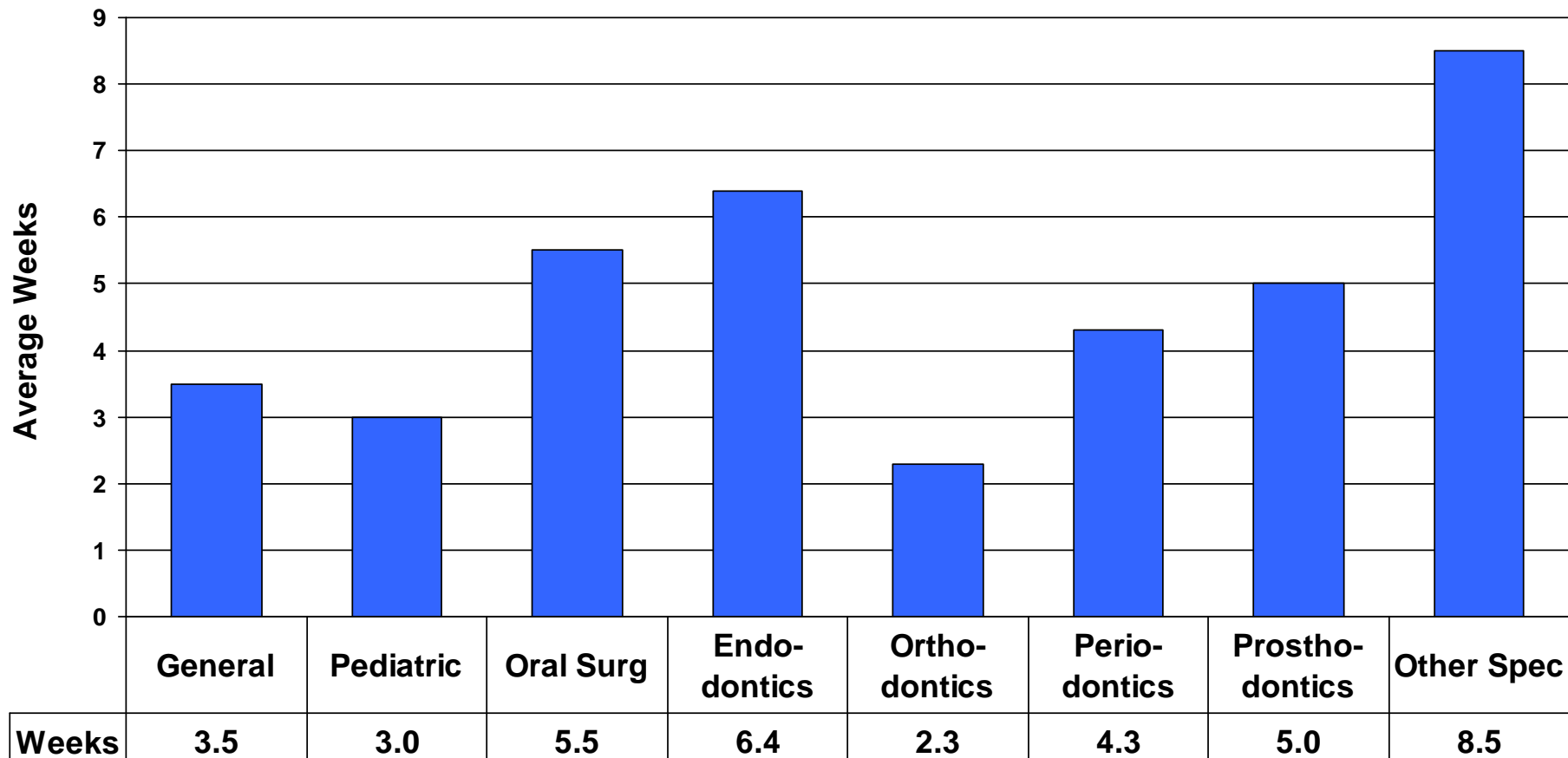
## PLANS TO RETIRE, LEAVE, OR REDUCE HOURS



## PATIENT CARE HOURS PER WEEK

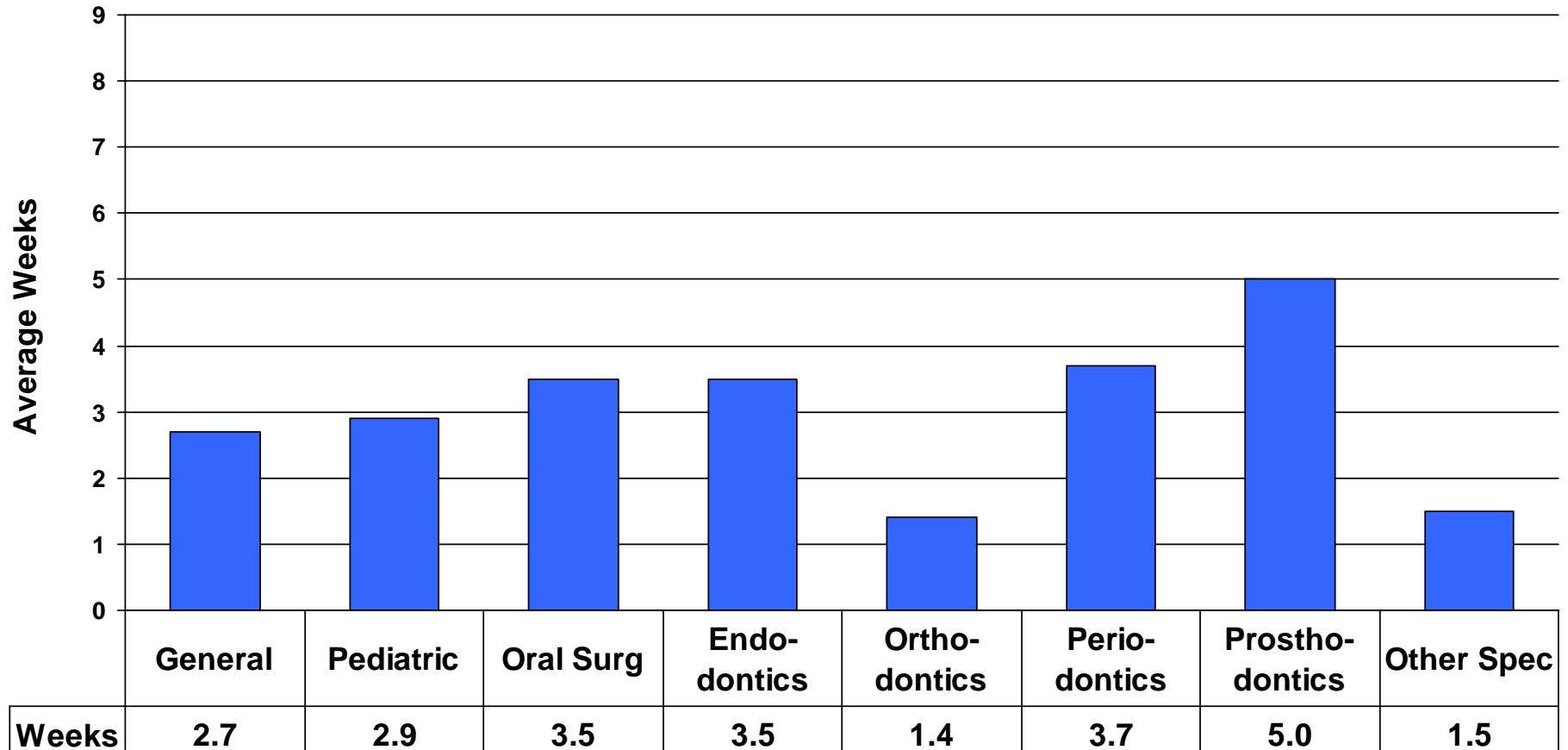


## WEEKS WAIT FOR NEW PATIENT



Average wait time for an appointment for new dental patients was 3.7 weeks.

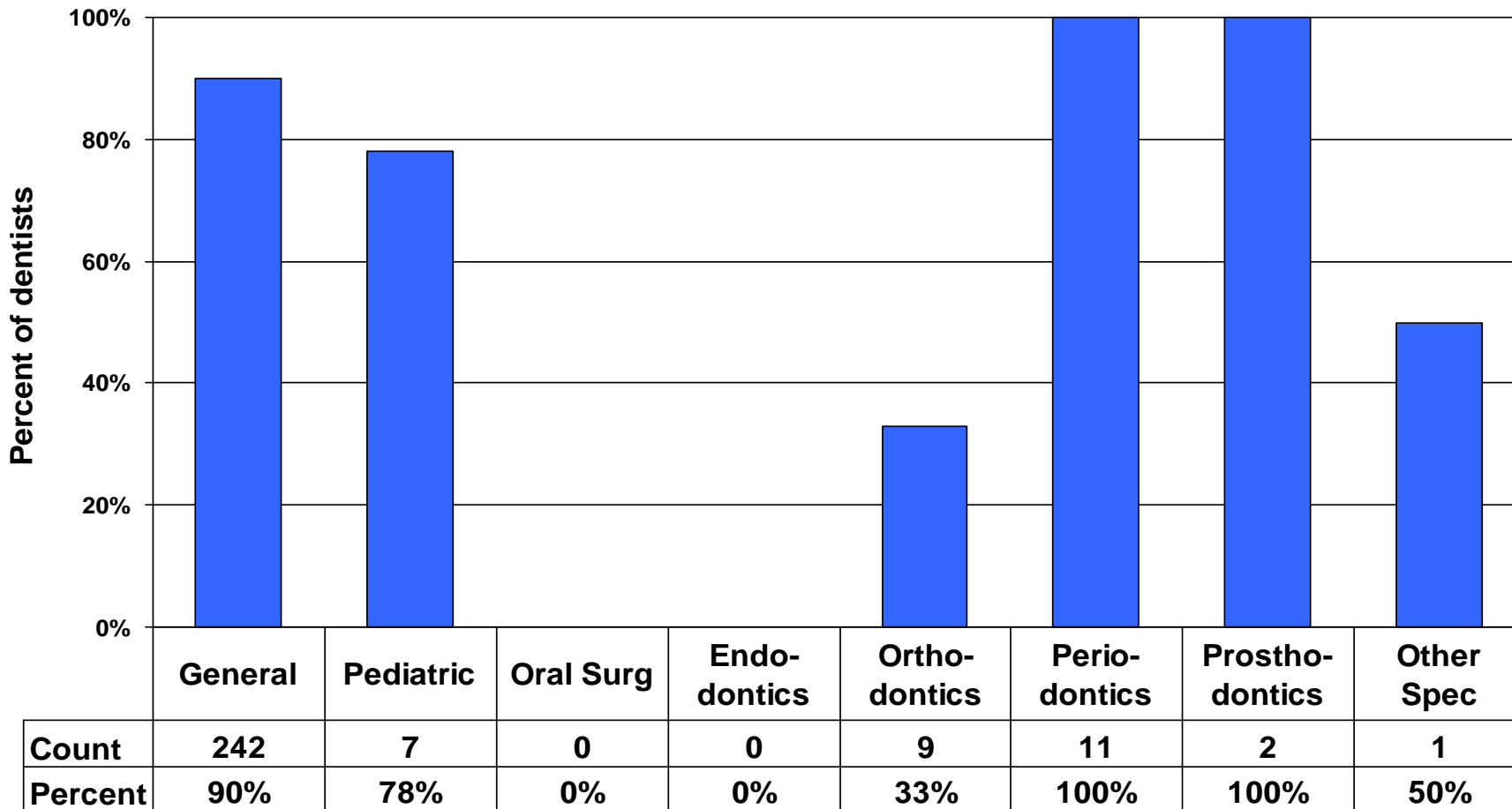
# WEEKS WAIT FOR CURRENT PATIENT



Average wait time for an appointment for current patients was 2.7 weeks.

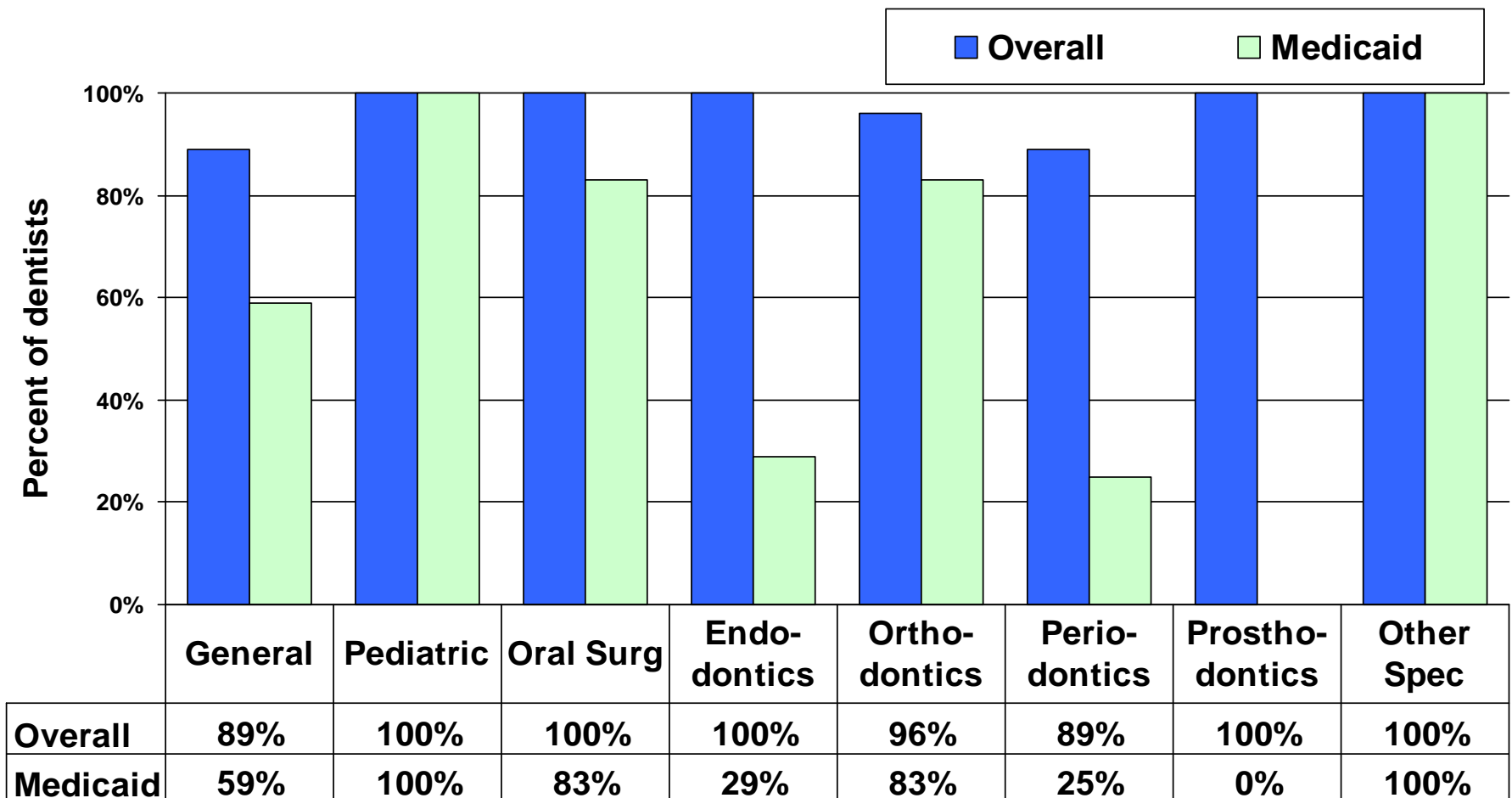


# WORK WITH HYGIENISTS



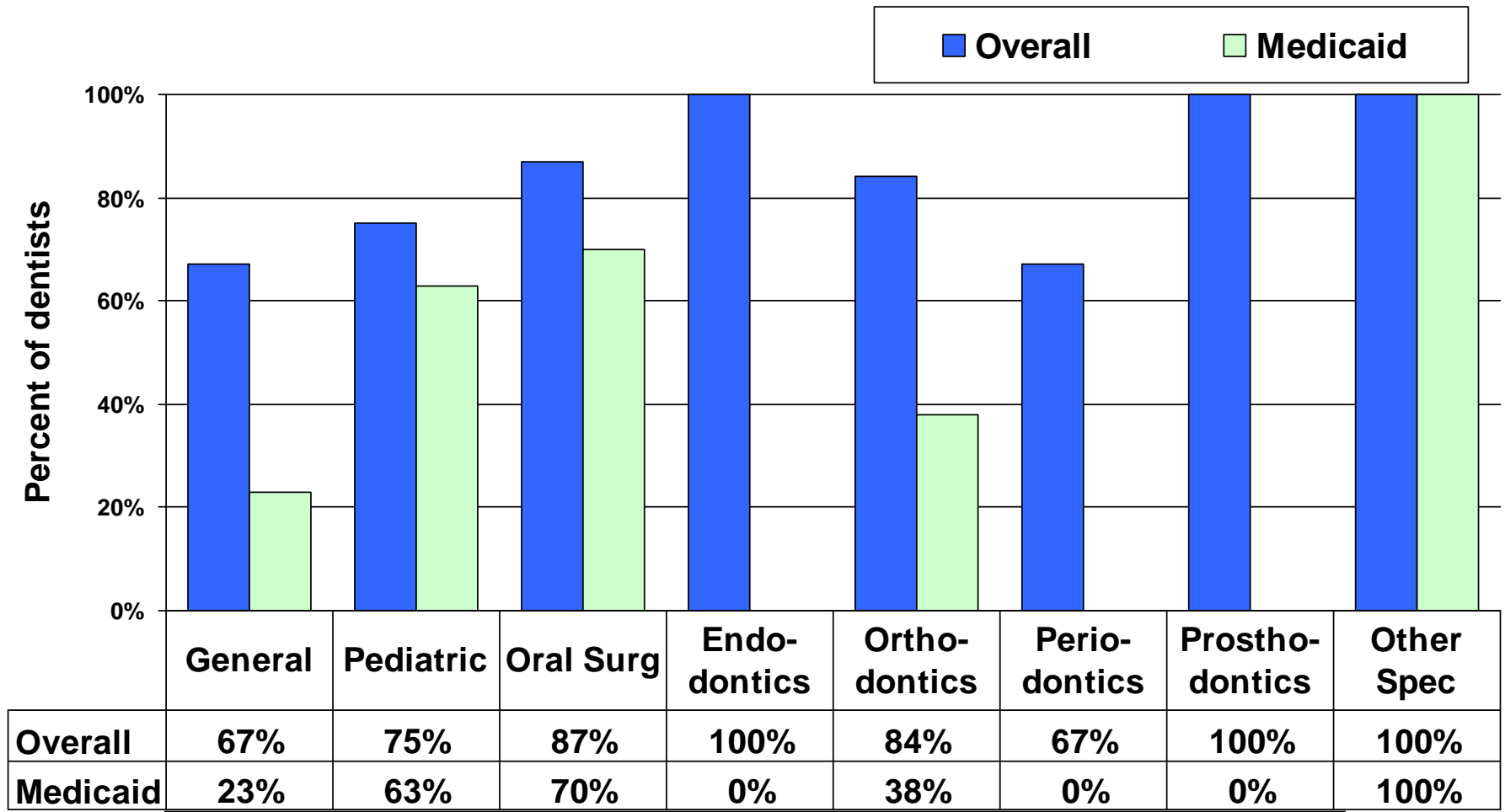
Overall rate was 78%.  
Multiple Dentists may work with the same hygienist(s).

# ACCEPTING NEW PATIENTS



91% accepted new patients overall, 62% accepted new Medicaid patients.

# ACCEPTING 5+ NEW PATIENTS / MONTH



70% accepted 5+ new patients overall, 27% accepted 5+ new Medicaid patients.

# **COMPARISON WITH PREVIOUS SURVEYS**

## Numbers of Dentists in Each Specialty, 1999-2007

	<b>Count by main specialty</b>				
	<b>1999</b>	<b>2001</b>	<b>2003</b>	<b>2005</b>	<b>2007</b>
Total active dentists	347	354	367	352	355
Primary care dentists	272	277	293	278	282
General practice	262	268	284	269	272
Pediatric dentistry	10	9	9	9	10
Specialist dentists	75	77	74	74	73
Oral Surgery	21	23	22	19	24
Endodontics	10	10	10	9	7
Orthodontics	28	27	26	27	27
Periodontics	12	11	10	12	11
Prosthodontics	4	4	3	4	2
Other Specialties	-	2	3	3	2

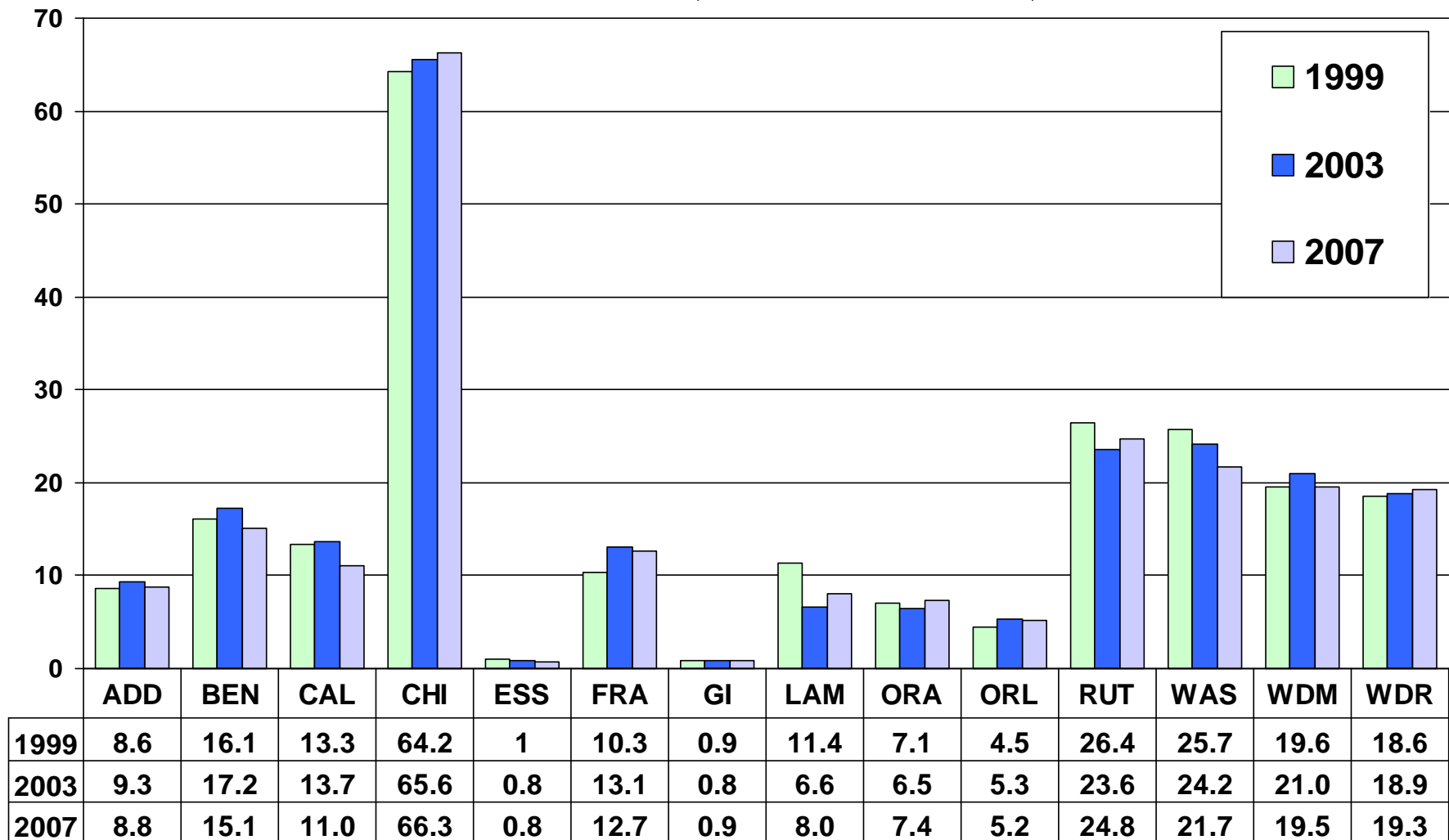
## Full Time Equivalents in each specialty, 1999-2007

	<b>Full Time Equivalents (FTE)</b>				
	<b>1999</b>	<b>2001</b>	<b>2003</b>	<b>2005</b>	<b>2007</b>
Total active dentists	290.2	284.6	280.8	267.1	269.8
Primary care dentists	228.4	223.4	226.7	216.0	221.6
General practice	221.7	216.4	219.8	209.1	214.9
Pediatric dentistry	6.7	6.9	6.9	6.9	6.7
Specialist dentists	61.8	61.3	54.1	51.1	48.2
Oral Surgery	18.9	19.7	17.1	15.1	16.2
Endodontics	9.2	8.9	8.6	7.1	6.4
Orthodontics	21.6	19.7	17.5	16.9	17.2
Periodontics	9.0	8.1	6.5	7.2	5.7
Prosthodontics	3.1	3.0	1.7	1.9	1.5
Other Specialties	-	1.9	2.6	2.7	1.2

## Selected indicators, 2001-2007

	1999	2001	2003	2005	2007
Total number of active dentists	347	354	367	352	355
Percent age 50 or older	46%	49%	53%	57%	59%
Percent age 55 or older	25%	29%	35%	41%	44%
Average patient care hours per week	35	33	31	31	31
Primary care:					
% of FTEs in Chittenden County	28%	28%	29%	29%	30%
FTEs / 100,000 population	37.8	36.5	36.6	34.7	35.7
% accepting new patients	85%	85%	88%	88%	90%
accepting new medicaid patients	43%	37%	57%	59%	60%
Average weeks wait - new patients	4	4.2	3.3	3.5	3.5
Plan to retire, leave, or reduce hrs within 5 yrs	n.a.	20%	23%	23%	24%
Percent working with dental hygienists	87%	86%	88%	88%	90%
Specialty care:					
% of FTEs in Chittenden County	44%	46%	44%	44%	44%
FTEs / 100,000 population	10.2	10.0	8.7	8.2	7.8

## PRIMARY CARE FTEs, BY COUNTY, 1999-2007





## AGE DISTRIBUTION, 1999-2007

