

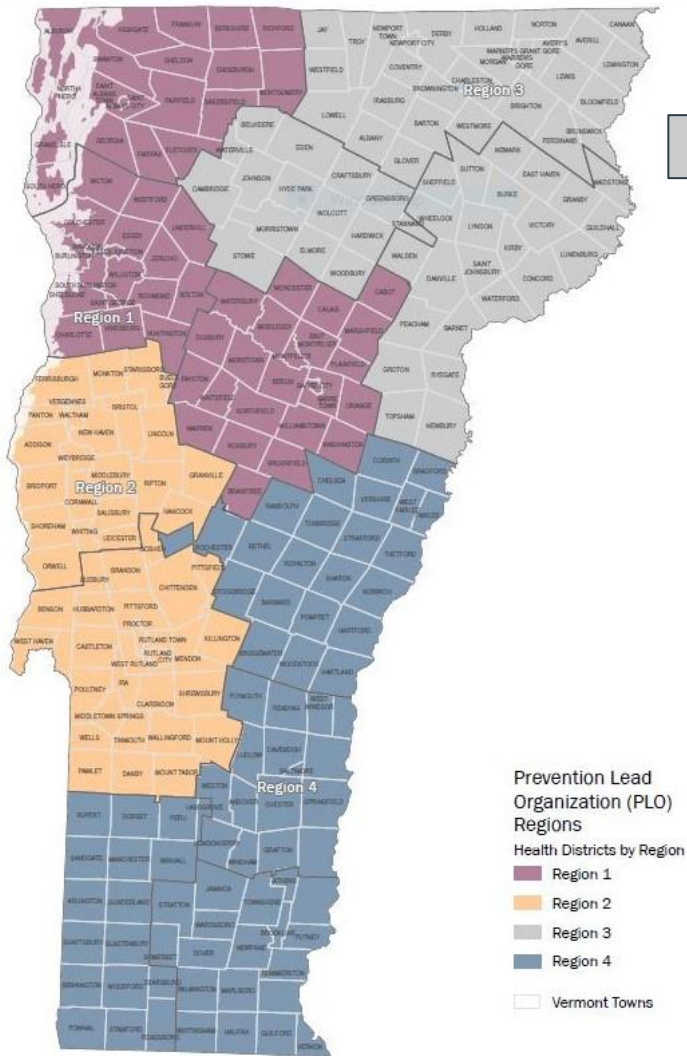
Northeast Vermont Prevention Consortium- Prevention Lead (NVPC-PL) Region 3

Substance Misuse Prevention Oversight & Advisory Committee

July 28, 2025



Local Support for Local Solutions

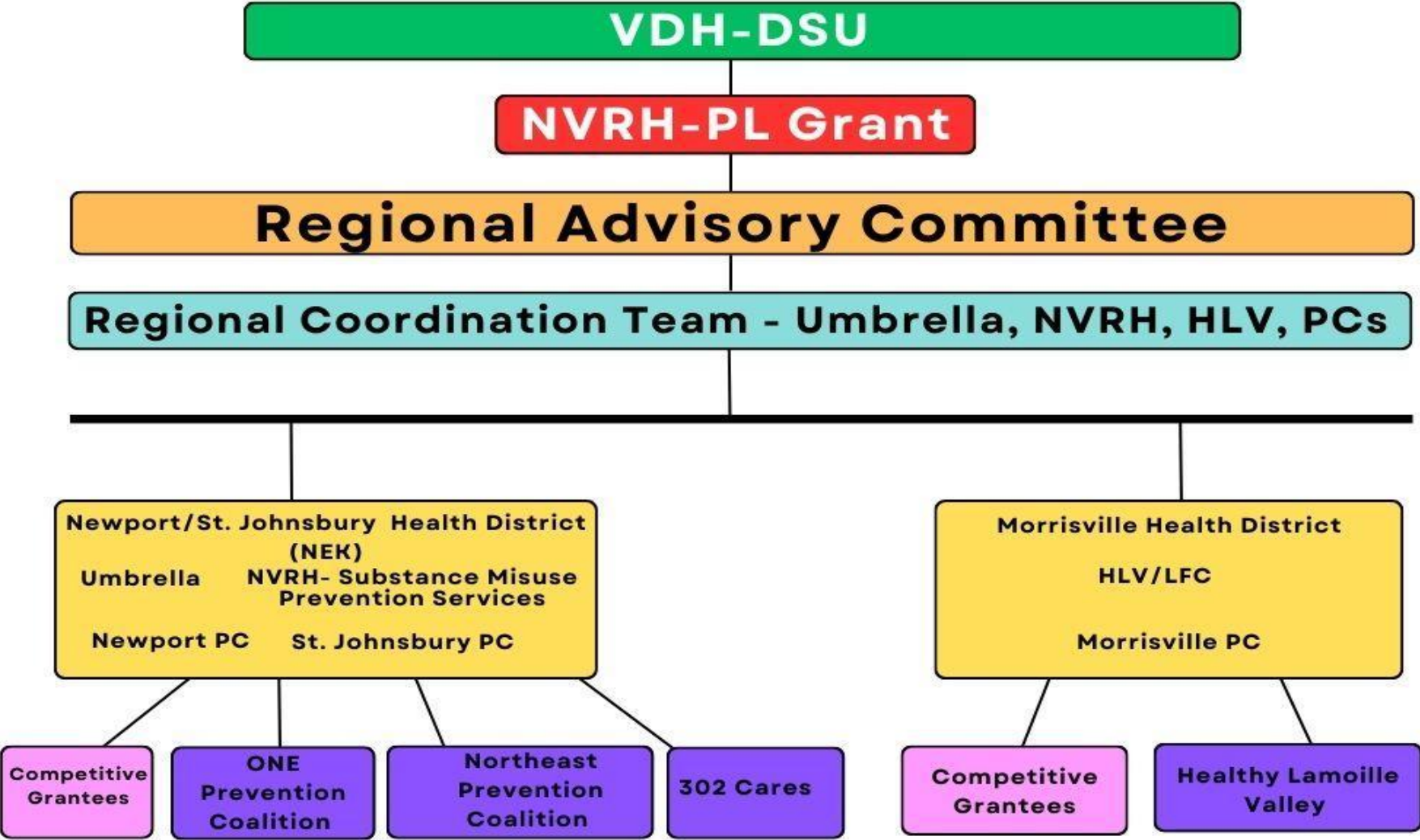


Northeastern Vermont Prevention Consortium serves as the Prevention Lead for Region 3, covering the St. Johnsbury, Newport, and Morrisville Health Districts, one of four prevention leads designated by the State of Vermont to prevent problematic substance use across the lifespan.

Funding awarded to Northeastern Vermont Regional Hospital (NVRH) through Vermont Department of Health, Division of Substance Use.



Region 3 Flowchart



Regional Coordination Team:

Jessica Bickford

Coalition Coordinator, Certified
Prevention Specialist
Healthy Lamoille Valley
jessica@healthylamoillevalley.org

Cheryl Chandler

Prevention Program Coordinator
Northeastern Vermont Regional Hospital
c.chandler@nvrh.org

Amanda Cochran

Executive Director
Umbrella Inc.
amanda@umbrellanek.org

Tiffany Garces

Prevention Consultant
Division of Substance Use Programs (DSU)
Vermont Department of Health
tiffany.garces@vermont.gov

Roynell Sanders, BSW

Public Health Specialist II
Division of Substance Use Programs (DSU)
Vermont Department of Health
roynell.sanders@vermont.gov

Joe Stacy, MPH

Prevention Consultant
Division of Substance Use Programs (DSU)
Vermont Department of Health
joseph.stacy@vermont.gov

Carolyn Towne

Director of Substance Misuse Prevention
Northeastern Vermont Regional Hospital
c.towne@nvrh.org

The background features abstract, overlapping geometric shapes in various shades of blue, ranging from light sky blue to deep navy blue. These shapes are primarily located on the left and right sides of the slide, framing the central text.

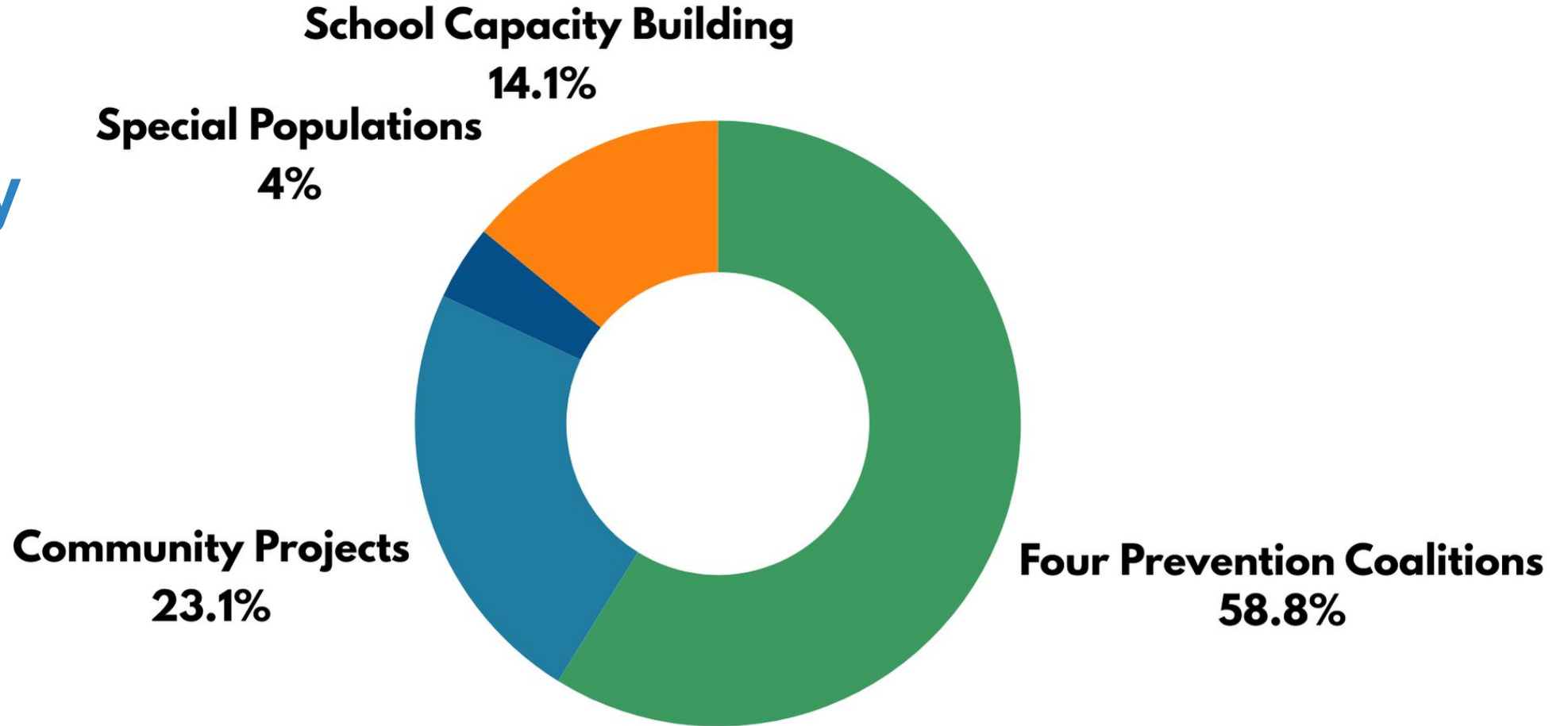
Strategic Plan Priorities for Region 3 - Northeast Vermont Prevention Consortium

1. Reduce underage alcohol use
2. Reduce underage cannabis/marijuana use
3. Reduce underage tobacco and electronic vaping product (EVP) use
4. Reduce adult high risk substance use
5. Reduce prescription drug misuse
6. Increase supports for LGBTQ+ youth
7. Create a community where youth and adults feel valued, connected, and supported.
8. Respond to emerging substance use related issues in the region with innovative strategies, including harm reduction approaches.
9. Build substance use primary and secondary prevention capacity and infrastructure at the community and regional levels.

WHAT'S HAPPENING IN REGION 3?



FY25 Funding Summary



\$522,751

Total Amount Subgranted Across Morrisville, Newport, & St. Johnsbury Health Districts

FY25 Subrecipients:

Projects:

Center for Agricultural Economy
Coventry Village School
Hazen Union High School
Hyde Park Elementary School
Kingdom East School District
Lake Region Union High School
Northeast Kingdom Human Services
The DREAM Program
The HUB
Umbrella

Coalitions:

302 Cares
Healthy Lamoille Valley
Northeast Prevention Coalition
ONE Prevention



VERMONT PREVENTION MODEL



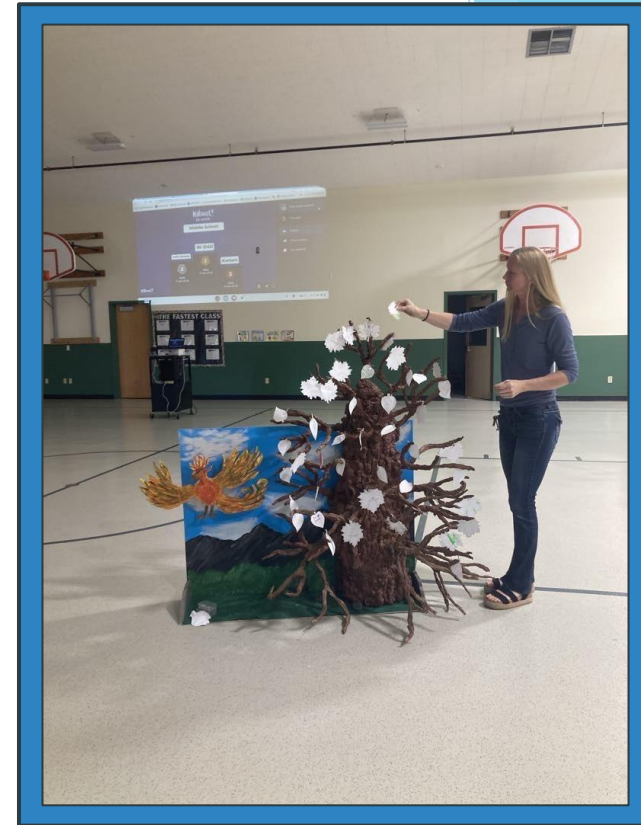
Examples

Coventry Village School :	Dream Program :	Hyde Park Elementary School:	St. Johnsbury Hub :	Center for Agricultural Economy:
Students in grades six through eight about substance use and misuse.	Guided Mentoring program in the Morrisville and St. Johnsbury Health Districts.	School House System creates transforming school belonging and increases attendance.	Local community volunteers prepare, cook, package ready to-go meals and deliver meals to the HUB for distribution on a weekly basis.	Project fosters social connection, addresses needs identified by the community and emphasizes assets using a big picture approach.

Coventry Village School Newport Health District

Prevention and Early Intervention Program

- Amount approved: \$10,000
- Project will continue providing prevention and early intervention supports and curriculum to students. The school is contracting with Journey to Recovery.



DREAM Program



Morrisville and St. Johnsbury Health Districts

Guided Mentoring

- Amount approved: \$20,000
- Funding supports DREAM's "Guided Mentoring" program, which is an in-school, curriculum-based, peer-to-peer mentoring program in which high school students are trained in mentoring best practice, matched with elementary youth, and guided by DREAM staff through an extensive classroom-based mentor-in-training curriculum. The mentoring curriculum explores four key themes: mentoring strategy, identity, sense of place, and purpose.

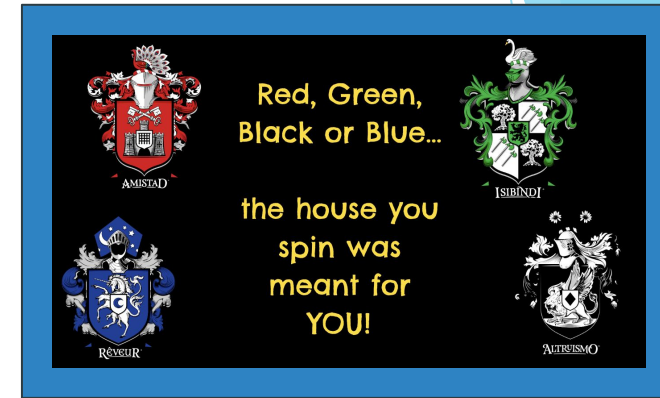


Hyde Park Elementary School

Morrisville Health District

School House System

- Amount approved: \$15,000
- Funds build on their School House System implemented in 2023-2024 school year with great success. These Houses will continue act as their “school family” during all their years at Hyde Park Elementary.
- This system builds character, encourages academic excellence, fosters school spirit, strengthens relationships and promotes a culture of belonging for all.



The HUB

St. Johnsbury Health District

HUB Community Connects by Nourishing Our Neighbors

- Amount approved: \$15,151
- Continuation of their project offering a welcoming and safe space for community members, likely living at or below the poverty line, to enjoy a meal together or take the prepared meal out to enjoy later. This project will involve local community volunteers to prepare, cook, package ready to-go meals and deliver meals to the HUB for distribution on a weekly basis.



St. Johnsbury
Community
HUB

stjcommunityhub@gmail.com
802-424-1134



The HUB Cooking Club is making prepared meals for our neighbors.

Do you or someone you know need a community meal?



Stop into the HUB on Mondays from 12PM until close to pick up prepared meals.

Meals are available weekly on Mondays* now through June 2025.

*unless otherwise indicated

Interested in supporting the HUB, community meals and other good neighboring practices uplifted by the HUB? Consider a donation through our VENMO (St J Community HUB). All transactions are private. **Include your email in the "What's this for" section to get an e-receipt**



venmo

Center for Agricultural Economy

Morrisville Health District

Community Connections for Learning and Resilience

- Amount approved: \$11,000
- Building on work begun in the community through the FY24 grant award. The project focuses on hearing from youth to foster social connection, address identified needs and emphasizes assets using a big picture approach.



Coalitions

St. Johnsbury Health District:
Northeast Prevention Coalition
302 Cares

Newport Health District:
ONE Prevention Coalition
Morrisville Health District:
Healthy Lamoille Valley

- Amount approved: \$100,000 per Health District with additional \$7,000 per Health District to address LGBTQ+ well-being priority.
- Funding for coalitions supports ongoing and sustainable substance misuse prevention work in their respective communities utilizing the strategic plan as a guide.
- Coalitions implement evidence-based practices aimed at promoting protective factors and reducing factors across the lifespan.



Northeast Prevention Coalition Caledonia & southern Essex counties





National Guard
Collaboration



Making Journals for poetry
at NEKCA youth center

COMMUNITY CARE CONTINUES

- 40+ community members joined
- 14 bags of trash collected
- 5 safe syringe pick-up trainings
- 4 routes for a combined 7 miles in St. J
- Even fewer sharps found this time!

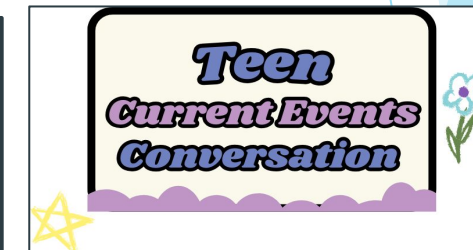
St. Johnsbury
Community
HUB

Vermont
CARES *Do it Safer*

Help Us Support Prevention


Making a Difference

Northeast Prevention Coalition



DEA NATIONAL ^{Rx}
TAKEBACK

Saturday,
April 27
10 a.m. - 2 p.m.
DEATakeBack.com





302 Cares
Pathways to
Community Wellness

Wells River

**Come celebrate
Family Dinner Night
with us!**

Family Day™ is a national effort to
promote family dinners as an effective way to reduce
youth substance use and other risky behaviors.



FAMILIES ENJOYING TWO DIFFERENT FAMILY DINNER NIGHTS -
PROMOTING COMMUNICATION



TABLING AT A COMMUNITY
EVENT. FOUNDING MEMBER &
BELOVED COMMUNITY MEMBER,
DON WATERMAN PICTURED



REPRESENTING 302 CARES
AT 4TH OF JULY PARADE

Healthy Lamoille Valley

A Program of the Lamoille Family Center
Morrisville
Health District



Drug Impairment Training for
Community Partners



OVX Rally
this past
Feb



Healthy Lamoille Valley
A Program of the Lamoille Family Center

Keeping Your Teen Safe Around Prom

- Find out where they are going before and after the prom, and if the setting will be supervised
- Talk to your teen about the risks of underage drinking and drug use and let them know you disapprove. Learn facts from the Youth Resources link below
- Share and discuss strategies to avoid substance use and stay safe
- Make sure your teen has a way to reach you if he/she is concerned, and wants to come home early
- If you are hosting an event, secure any alcohol, cannabis and other substances that may be in your home

**THANK YOU FOR NOT PROVIDING
ALCOHOL TO MINORS**

Problems that need to be solved in the Lamoille Valley region:

Problematic use of:

- alcohol
- cannabis
- tobacco/nicotine
- vape devices
- opioids
- prescription medication
- emerging substances

Which substances are of high importance to you?



WHERE ALL PEOPLE BELONG AND THRIVE

Orleans & northern Essex counties



SAFE
PRESCRIPTION
DRUG
DISPOSAL



DID YOU KNOW THAT CIGARETTE BUTTS ARE THE
NUMBER #1 MOST LITTERED ITEM ON THE PLANET?



FREE FAMILY EVENT!
JUNE 15TH
10-2

THE ONE PREVENTION
COALITION WOULD LIKE TO
INVITE YOU TO:

**A PARTY
AT THE HOOD!**



FY26 Subrecipients:

Center for Agricultural Economy
Hyde Park Elementary School
Kingdom East School District
Lamoille South Supervisory Union
North Country Supervisory Union
Stable Connections
The St. Johnsbury School District
North Central Vermont Recovery
Center

Coalitions:

302 Cares
Healthy Lamoille Valley
Northeast Prevention Coalition
ONE Prevention

Evaluation & Accountability

- **Needs Assessment:** A comprehensive regional needs assessment was completed at the start of the grant period and is updated annually to reflect evolving priorities.
- **Subgrantee Reporting:** All subgrantees, including coalitions, submit quarterly reports detailing progress and demographic data.
- **Ongoing Coordination:** Monthly check-in meetings are held with the DSU team to ensure alignment and address challenges.
- **Fiscal Reporting:** The fiscal agent, NVRH, submits monthly financial reports to maintain transparency and compliance.
- **External Evaluation Support:** NVRH contracts with the Pacific Institute for Research and Evaluation (PIRE) to ensure all evaluation requirements are met and to enhance the quality and use of data.
- **Annual Site Visit:** The consortium participates in one formal site visit per year with the DSU team to support reflection and continuous improvement.
- **State Evaluation:** The consortium is participating in the JG Evaluation through DSU.
- **Feedback Surveys:** Annual survey administered to RAC members and subrecipients to improve processes.

Challenges

- Timing of funds can be challenging related to additional assessments and proper strategic planning.
- Managing new subgrantees who have differing levels of experience in managing grants requiring increased technical assistance.

Regional Advisory Committee:

Made up of key stakeholders from all three health districts, this Committee:

- Shapes strategy with data-informed input
- Approves funding decisions for local projects
- Learn and apply the Strategic Prevention Framework and the Vermont Prevention Model
- Advise on training and capacity building
- Monitor program and fiscal progress
- Advocate for prevention in our communities
- Serve as a bridge to local voices and needs
- Share insights from lived and professional experience
- Offer technical support when needed
- Represent prevention publicly
- Attend monthly meetings and subcommittees

Successes:

- Increased infrastructure to prepare for and implement the increased investment.
- Bringing together 3 health districts seamlessly
- Funded 23 projects and 4 coalitions over the last two years totalling \$829,269
- Consistent, significant, equitable funding for all coalitions in the region leading to increased sustainability.
- Greater cohesion between the 4 coalitions in our region and increased technical assistance, networking and collaboration opportunities (Coalition Leadership meets every other month)
- Completed Region 3 school needs assessment in collaboration with PIRE to guide school-based prevention capacity-building. This resulted in:
 - \$76+K provided to support school-based programming, including Getting to 'Y', staff training and curriculum purchases for 7 schools/supervisory unions across our region
 - 71% of applicants for FY26 prevention funds are from schools

Successes (cont.)

- Supported capacity-building across the region:
 - Technical Assistance to other VPLOs
 - Prevention 101 for all subrecipients
 - Prevention Consultant orientation
 - Increased number of attendees at CADCA Leadership Forum
 - PreventionWorks! Conference
 - Financial support to schools for training and curriculum purchases
 - Pathways to Prevention Event FY23
 - RBA Training
 - Grant Writing
 - Navigating Grant Budgets & Invoices

Centering Equity in Our Structures

➤ **Embedding Equity in Our Processes**

- Equitable distribution of funds across all three health districts
- Earmarked funding for historically underrepresented populations (e.g., older Vermonters, LGBTQ+ communities)
- Every RAC meeting includes an equity-focused component

➤ **Inclusive Leadership**

- RAC includes members from all three districts with diverse personal and professional backgrounds
- Self-reported identity and sector info are tracked to ensure broad representation in decision-making

➤ **Responding to Community Input**

RAC survey results led to:

- Renewed focus on prevention for older Vermonters
- Reinstatement of stipends for members without employer support

Building Capacity for Equity in Practice

Training & Support for Equity-Driven Work

- FY25: Targeted trainings to address gaps identified in RFP review process
- Topics include:
 - Building a budget
 - Basic grant writing
 - Grant management skills tailored to subrecipient needs

Equity Through Data

- Mandatory RBA training for current subrecipients
- Emphasis on collecting detailed demographic data
- Ensures outreach effectively includes special populations



**DISCOVER
MORE**



VISIT:
nvrh.org/nvpc-pl/

