



Children with Special Health Needs (CSHN)

Children with Special Health Needs (CSHN)

CSHN is a free public health program that supports Vermont children and youth by promoting comprehensive, culturally responsive, community-based, and family-centered services.

- For children with complex, chronic health conditions and/or developmental needs
- Birth to age 21
- A team of social workers, nurses, and specialty staff with experience supporting children with special health needs, their families, and providers.



CSHN Programming



Community Support

- Care Consultation
- Community Nutrition Services
- Health Systems Team



Medicaid Administered Programs

- Children's Personal Care Services
- Pediatric Hi-Tech Nursing Program
- Pediatric Palliative Care Program



Screening

- Newborn Screening
- Vermont Early Hearing Detection and Intervention (VTEDHI)

Care Consultation Team

We provide consultation to families, care teams, and community partners to:

- Access resources
- Navigate the system of care
- Reduce barriers

We work with families and the teams that support them.



Our team of consultants are located throughout the state.

Our involvement is short term and on an as needed basis.

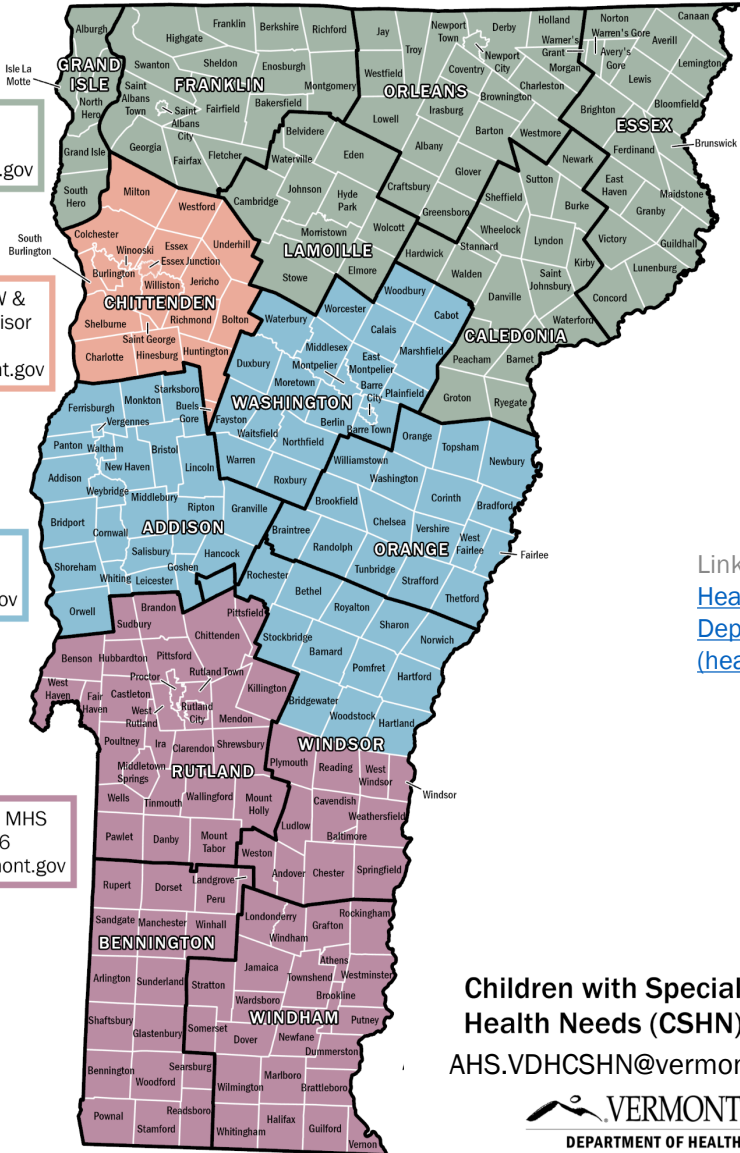
Care Consultant Service Areas

Stacia Cheney, BSW
802-760-9077
Stacia.Cheney@vermont.gov

Marinell Newton, LICSW &
Care Consultant Supervisor
802-578-2667
Marinell.Newton@vermont.gov

Jennifer Taylor, MA
802-829-6631
Jennifer.Taylor@vermont.gov

Deb Forrett, BSW, MHS
802-598-4716
Debra.Forrett@vermont.gov



Link found at: [Care Consultation and Health Systems | Vermont Department of Health \(healthvermont.gov\)](https://healthvermont.gov/Care-Consultation-and-Health-Systems)

Children with Special Health Needs (CSHN)
AHS.VDHC SHN@vermont.gov





Community Nutrition Services

Individualized nutrition services are sometimes necessary for children with special health needs who have specific growth, feeding and dietary needs.

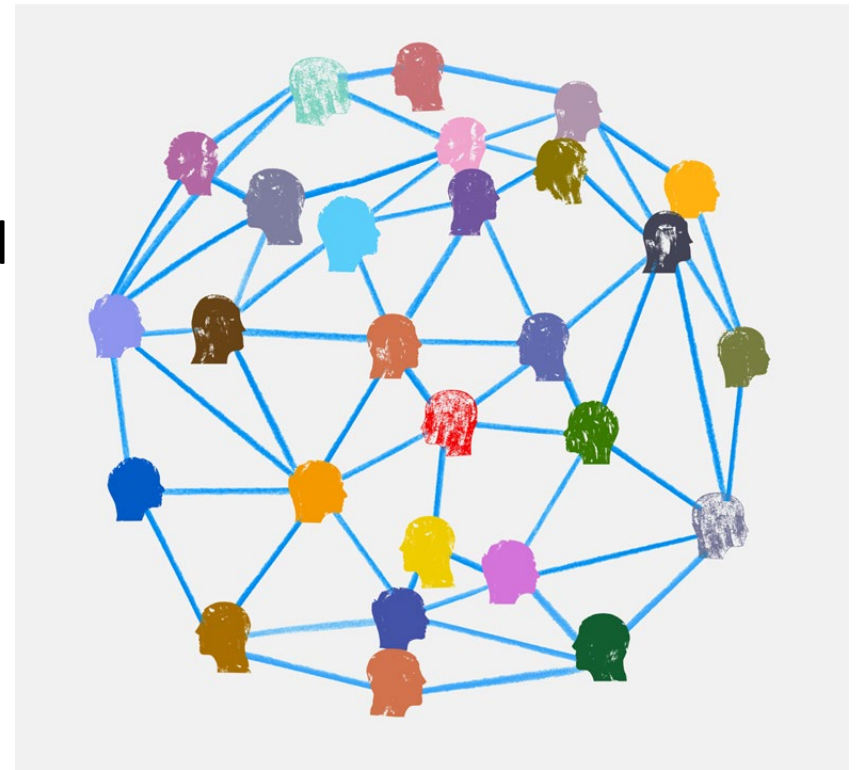
Services are provided by expertly trained Registered Dietitians (RDs) who serve all regions of Vermont.

Health Systems Team

Our team works to improve access and equity for the CYSHCN population.

We collaborate with community and intergovernmental partners to address systemic gaps by

- quality improvement projects
- generating resources
- being data driven



Children's Personal Care Services



Sometimes children need extra help to complete their daily personal care routines. Children's Personal Care Services may be able to help families and caregivers to pay for one-on-one support for a child needing additional assistance completing their age-appropriate activities of daily living, including dressing, bathing, grooming, toileting, eating and/or mobility.

Pediatric High-Tech Nursing (HTN)

Pediatric High-Tech Nursing enables medically fragile children with complex needs to be cared for safely at home and in their community.

Pediatric High-Tech Nursing services provides care to children that require high technology medical equipment and specialized nursing skills.



Pediatric Palliative Care Program

Palliative care provides an added layer of support for children and adolescents living with serious illness.

- Can help to ease pain and other upsetting symptoms resulting from a condition or treatment
- Available for children at any age and any stage of illness
- Can be combined with other treatments the child is receiving



Newborn Screening

All babies born in Vermont receive newborn screening tests to check for rare but serious conditions which may not be obvious at birth.

Babies are screened for 35 serious health conditions

When these health problems are found early by testing, babies can get the treatment and care they need.



Vermont Early Hearing Detection and Intervention (VTEHDI)

Follows the EHDI National Benchmarks:

- Screen hearing by 1 month of age.
- Diagnose hearing by 3 months of age.
- Enroll into early intervention by 6 months of age.

Provides:

- Audiology Follow-Up Guidance state-wide.
- Collaboration with hospitals, midwives, audiologists primary care providers and Early Head Start/Head Start Programs.
- Partners with Early Intervention: including Language and Developmental Assessments.
- Collaboration with Family Based Organizations for family-to-family support.
- Partnerships with Deaf and Hard of Hearing Mentors.
- Participates in new initiatives: Hearing Screenings in early childhood and Congenital CMV initiatives.
- Family Retreats, Parent and Professional Trainings.

For more information: Healthvermont.gov/hearing



**Contact us,
we'll figure it
out together.**



CSHN Email
ahs.vdhcshn@vermont.gov



[www.healthvermont.gov/
family/children-special-
health-needs](http://www.healthvermont.gov/family/children-special-health-needs)



802-863-7338 or
800-660-4427